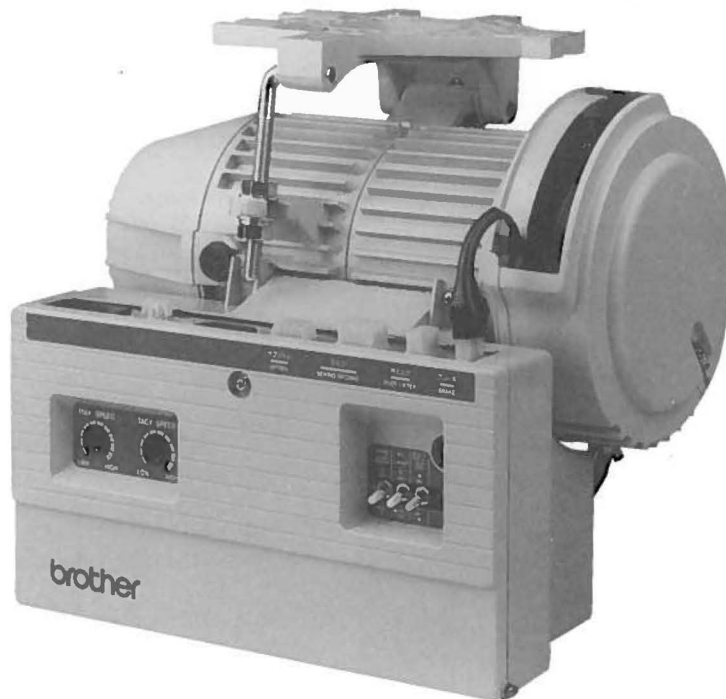


D.C. MOTOR
MOTOR D.C.
LE MOTEUR D.C.
EL MOTOR D.C.

MD-806, 807 (Single-Phase Type)
MD-816, 817 (Three-Phase Type)

PARTS BOOK
TEILEKATALOG
LIVRE DES PIECES
LIBRO DE REFERENCIA DE PIEZAS



Notes for using this parts book

1. If the symbol is found in the "Parts No." column of the "Assembly No." column, refer to the different parts list on page 15.
2. The symbol in the "Parts No." column indicates that the parts is not available for supply. If, however, there is a number in the "Assembly No." column, the parts can be ordered as an assembly. Please, therefore, order by using the assembly number.
3. This book was prepared based on information available in March 1993.
4. Parts are subject to changes in design without prior notice.

Anmerkungen zum Gebrauch dieses Stücklistebuches

1. Dieses Zeichen in der Spalte "Parts No. (Teilnummer)" oder "Assembly No. (Gerätesatznummer)" verweist auf die Gesonderte Stückliste auf Seite 15.
2. Dieses Zeichen in der Spalte "Teilnummer" bedeutet, daß dieser Teil nicht lieferbar ist. Wenn jedoch in der Spalte "Gerätesatznummer" eine Nummer steht, kann dieser Teil als ein Geräteteilsatz bestellt werden. Bestellen Sie daher bitte mit dieser Gerätesatznummer.
3. Dieses Buch basiert auf den Informationen vom März 1993.
4. Modelländerungen sind vorbehalten.

CONTENTS

A . Motor mechanism (1)	1
A . Motor mechanism (2)	2
B . Control box (Mark II, NBN, BAST, P62, P64, C51, P73, P81, COV)	3
C . Control box (APM, B845-900S, ABL, SBL)	5
D . Control box (B7380, B7910, B7740, B8450)	7
E . Operation panel, switch box mechanism ...	9
F . Material edge sensor related (option) (1) ..	11
G . Material edge sensor related (option) (2) ..	12
H . Production counter, pedal for standing operation	13
DIFFERENT PARTS LIST, CONTROL BOX FOR SUPPLY LIST	15
INDEX	35

INHALTSVERZEICHNIS

A . Motors (1)	1
A . Motors (2)	2
B . Schaltkasten (Mark II, NBN, BAST, P62, P64, C51, P73, P81, COV)	3
C . Schaltkasten (APM, B845-900S, ABL, SBL)	5
D . Schaltkasten (B7380, B7910, B7740, B8450)	7
E . Schaltkasten	9
F . Für Materialkantensensor (Sonderausstattung) (1)	11
G . Für Materialkantensensor (Sonderausstattung) (2)	12
H . Stückzähler Fusstritt für stehenden Arbeitsplatz	13
ZUBEHÖRLISTE	15
VERZEICHNIS	35

Notes sur l'utilisation de ce manuel de pièces détachées

1. Si le symbole se trouve dans la colonne "Parts No. (N° de pièce)" ou dans la colonne "Assembly No. (N° jeu de pièces)", veuillez vous référer à la liste de pièces annexe page 15.
2. Le symbole dans la colonne "N° de pièce" signifie que la pièce ne peut être fournie. Si, dans la colonne "N° jeu de pièces", il y a un numéro de nomenclature, la pièce peut être commandée comme faisant partie d'un jeu de pièces. Donc, pour toute commande, veuillez spécifier le n° de jeu de pièces.
3. Ce manuel a été fait d'après les renseignements valables au mois de Mars 1993.
4. Les pièces peuvent être sujettes à des modifications sans préavis.

Notas para usar este Libro de Piezas

1. De haber un símbolo junto al "Parts No. (Número de Pieza)" o en la columna del "Assembly No. (Número de juego)", habrá que mirar la lista de piezas separada de la página 15.
2. El símbolo , que se encuentra en la columna del "Número de Pieza", quiere decir que no se dispone de dicha pieza sola. Cuando, empero, hay un número en la columna del "Número de Juego", se podrá ordenar la pieza con todo el juego. Por lo tanto, será mejor hacer el pedido recurriendo al número del juego respectivo.
3. Este libro ha sido compilado basándose en los datos de que se disponía en Marzo 1993.
4. Las piezas quedan sujetas a cambios de diseño sin aviso previo.

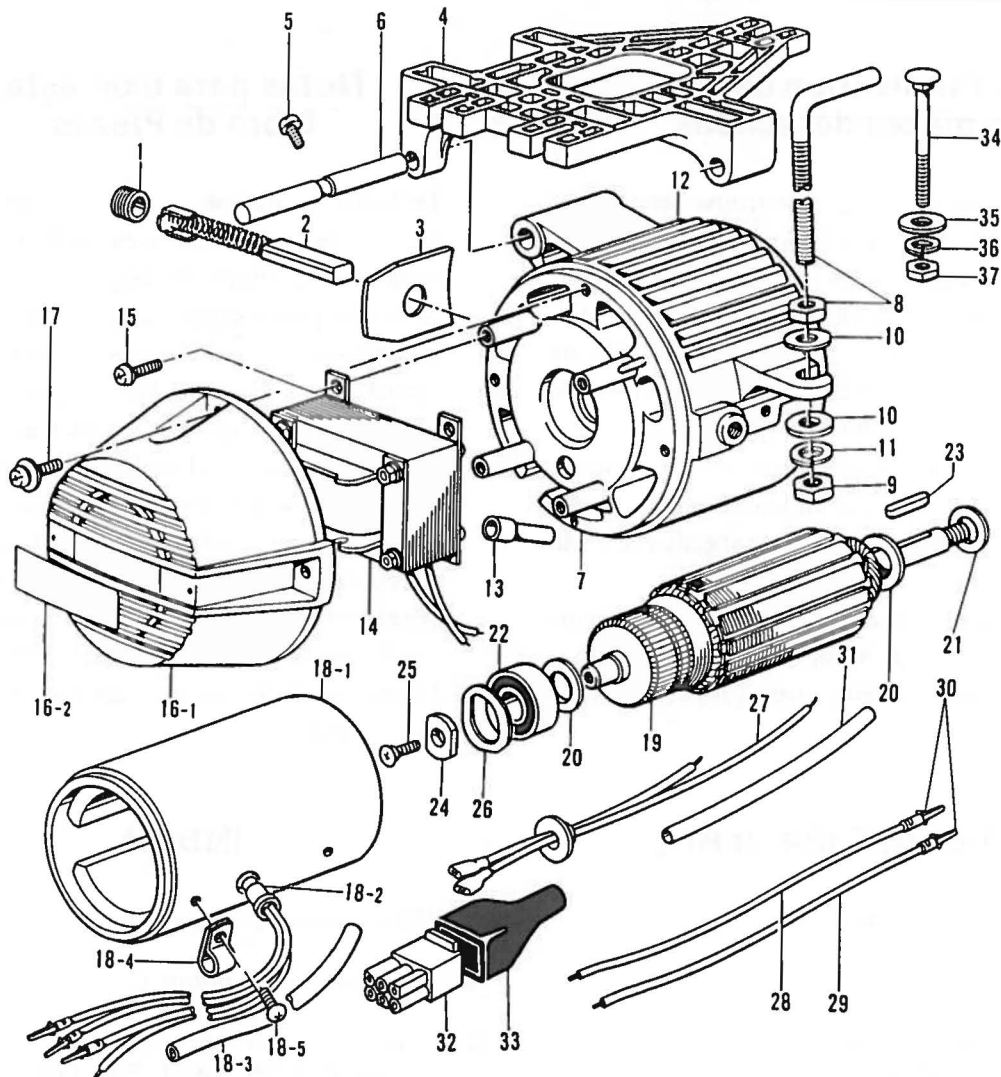
TABLE DES MATIERES

A . Mécanisme du moteur (1)	1
A . Mécanisme du moteur (2)	2
B . Mécanisme du boîtier de contrôle (Mark II, NBN, BAST, P62, P64, C51, P73, P81, COV)	3
C . Mécanisme du boîtier de contrôle (APM, B845-900S, ABL, SBL)	5
D . Mécanisme du boîtier de contrôle (B7380, B7910, B7740, B8450)	7
E . Boîtier d'interrupteurs	9
F . Capteur de bord de tissu relatif (en option) (1)	11
G . Capteur de bord de tissu relatif (en option) (2)	12
H . Compteur de-production pédale pour opération en station debto	13
LISTE DES PIECES ACCESSOIRES	15
INDEX	35

INDICA

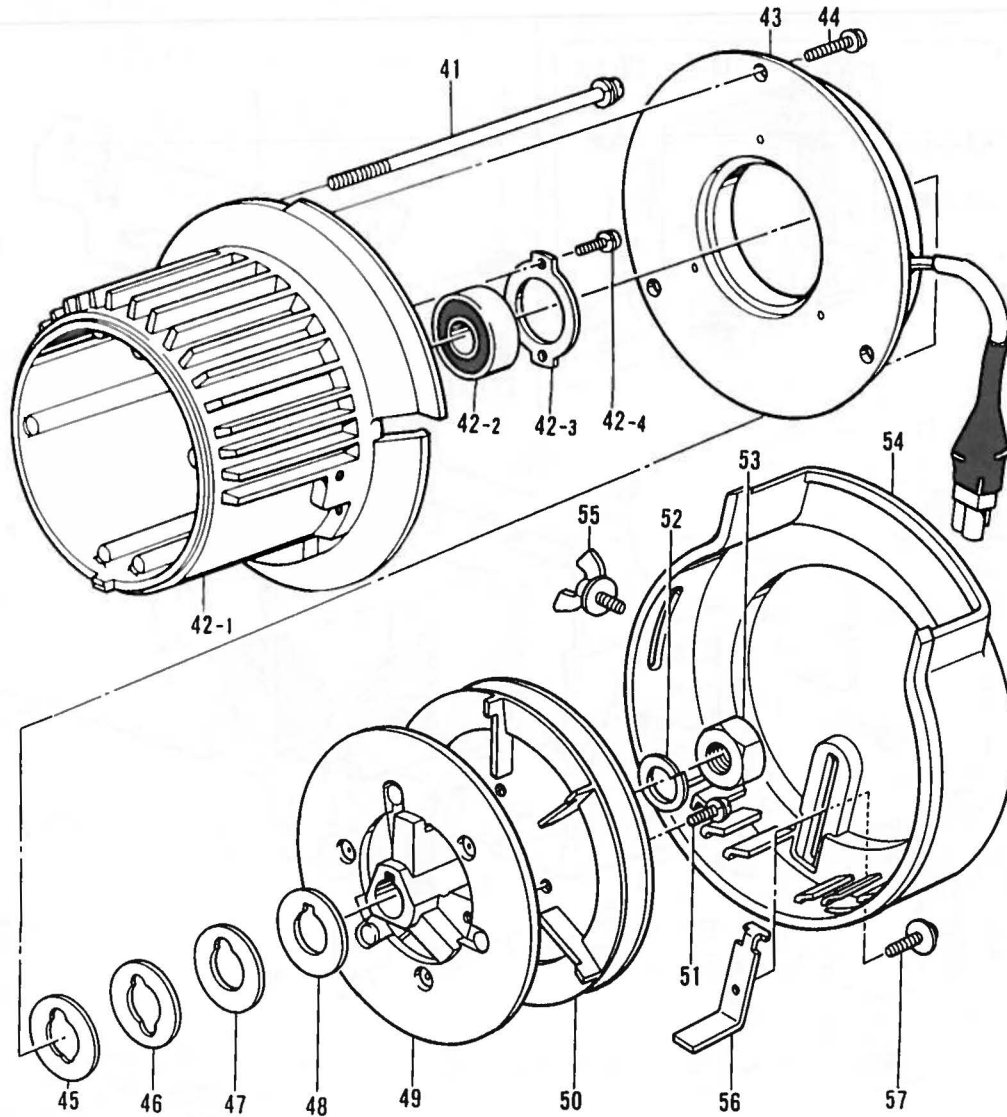
A . Mecanismo del motors (1)	1
A . Mecanismo del motors (2)	2
B . Mecanismo del caja de controles (Mark II, NBN, BAST, P62, P64, C51, P73, P81, COV)	3
C . Mecanismo del caja de controles (APM, B845-900S, ABL, SBL)	5
D . Mecanismo del caja de controles (B7380, B7910, B7740, B8450)	7
E . Caja de interruptores	9
F . Piezas relacionadas al detector de borde de tejidos (opcional) (1)	11
G . Piezas relacionadas al detector de borde de tejidos (opcional) (2)	12
H . Contador de producción pedal para operar de pie	13
LISTA DE PIEZAS ACCESORIAS	15
INDICE	35

A. Motor mechanism (1) / Motors (1) /
 Mécanisme du moteur (1) / Mecanismo del motors (1)



REF. NO.	CODE	Q' TY	NAME OF PARTS	REF. NO.	CODE	Q' TY	NAME OF PARTS
1	224475-001	2	HOLDER CAP	18-4	224504-001	1	CODE HOLDER #7
2	226992-001	1	MD CARBON BRUSH ASSY	18-5	008400-805	1	SCREW 4X8
3	224476-000	2	INSULATION SHEET	19	*	1	ROTOR
4	J00107-001	1	MD806 BASE #2	20	224485-000	2	WASHER 2X15X22ST
5	062061-005	1	SCREW 6X10	21	224487-000	1	WASHER 2. 3X15X26ST
6	224540-001	1	PIN 9. 3X83	22	076202-801	1	BEARING 6202ZZ #2
7	J00109-001	1	DC BRACKET ASSY(L) #3	23	231008-001	1	KEY 5X5X20
8	210965-081	1	BOLT(L) 10 ASSY	24	231009-001	1	WASHER 2. 3X6. 9X22ST
9	021100-206	1	NUT 2-10	25	214897-001	1	SCREW 5X12F
10	025100-236	2	PLAIN WASHER 10	26	203684-001	1	WAVE WASHER
11	028100-246	1	SPRING WASHER 2-10	27	J00146-001	1	REACTED CODE ASSY #2
12	*	1	MD MOTOR ASSY	28	J00148-001	1	TERMINAL CODE (BLUE)
13	J00074-001	2	CONNECT TERMINAL CE2	29	J00147-001	1	TERMINAL CODE (RED)
14	228221-001	1	REACTOR 35 MH ASSY #2	30	217133-001	1	PLUG PIN PM-75
15	215080-001	2	SCREW 4X10D	31	J00149-001	1	TUBE 11X300PV
16-1	J00112-001	1	DC REACTOR COVER #3	32	219582-001	1	6P PLUG PM-N
16-2	—	1	NAME PLATE	33	219603-001	1	PLUG COVER #11
17	215081-001	1	SCREW 4X10D	34	222372-001	3	BOLT 8X70
18	230431-001	1	FRAME ASSY #2	35	213650-001	3	WASHER 2. 3X8. 5X38ST
18-1	230432-001	1	YOKE ASSY #3	36	028080-246	3	SPRING WASHER 2-8
18-2	229335-001	1	THERMISTER #5	37	021080-206	3	NUT 2-8
18-3	226671-001	1	TUBE 150X65				

A. Motor mechanism (2) / Motors (2) /
 Mécanisme du moteur (2) / Mecanismo del motors (2)

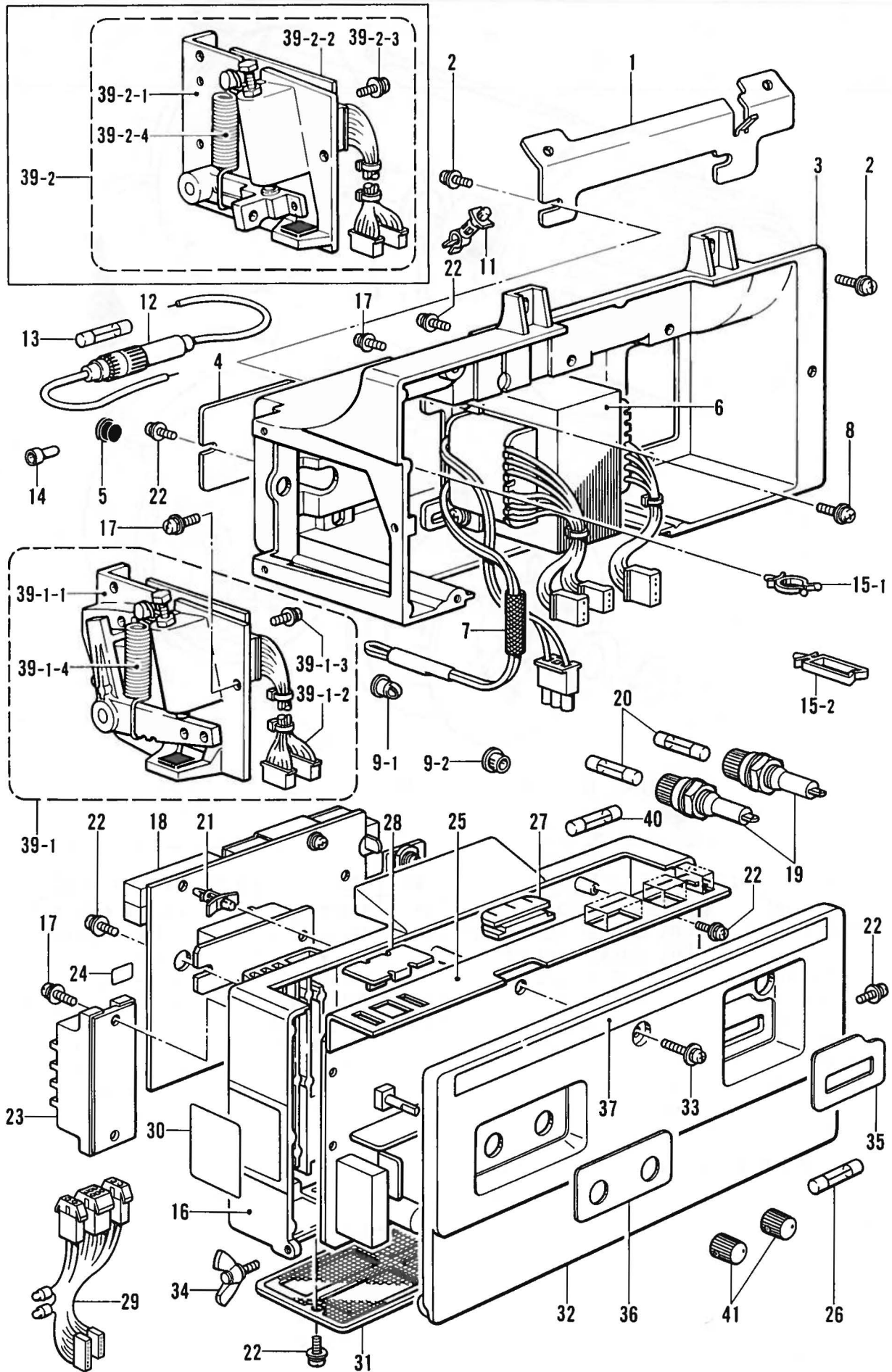


REF. NO.	CODE	Q' TY	NAME OF PARTS	REF. NO.	CODE	Q' TY	NAME OF PARTS
41	228216-001	4	SCREW 6X150D	48	224503-001	2	WASHER 0. 3X15. 1X30ST
42	J80319-001	1	DC BRACKET (R) #3 ASSY	49	231013-001	1	BRAKE(A30)AMATURE ASSY
42-1		1	DC BRACKET (R) #3	50	*	1	PULLY
42-2	076202-801	1	BEARING 6202ZZ #2	51	211528-001	3	SCREW 5X12
42-3	J00128-001	1	BEARING WASHER #2	52	237641-001	1	SPRING WASHER 14
42-4	215080-001	2	SCREW 4X10D	53	021140-305	1	NUT 14
43	J00130-001	1	BRAKE (A30) STATOR	54	J00106-001	1	DC BELT COVER #20
44	211528-001	3	SCREW 5X12	55	J00143-001	2	WING BOLT 5X10
45	222753-000	3	WASHER 0. 15X15. 1X30ST	56	J00351-001	1	BELT CLAMP PLATE 2
46	219517-000	3	WASHER 0. 1X15. 1X30ST	57	224508-001	1	SCREW 4X10DC
47	231458-001	2	WASHER 0. 12X15. 1X30ST				

DIFFERENT PARTS LIST

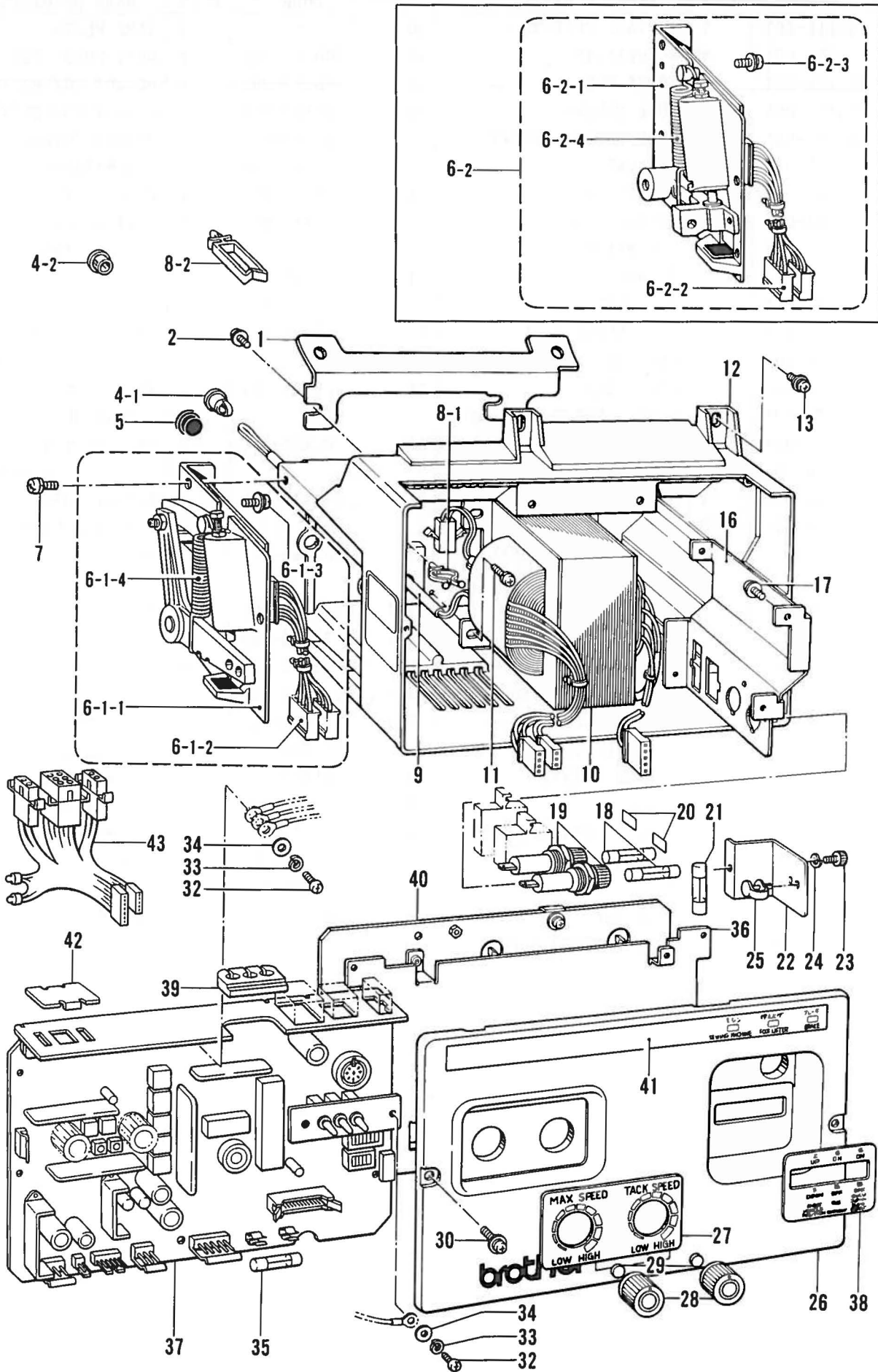
REF. NO.	NAME OF PARTS	MD-806		MD-816		MD-807		MD-817	
		100V~240V	200V~240V	380V~415V	100V~240V	200V~240V	380V~415V		
12	MD MOTOR	J80069-001	J80070-001	J80071-001	J80321-001	J80073-001	J80074-001		
19	ROTOR	231004-001		231018-001	231006-001		231007-001		
50	PULY M 80-1 M 90-1 M105-2 M125-2					228840-000 228237-001 228839-001 231017-001			

B. Control box / Schaltkasten / Mécanisme du boîtier de contrôle /
 Mecanismo del caja de controles (Mark II) (NBN) (BAST) (P62, P64) (C51, P73, P81) (COV)



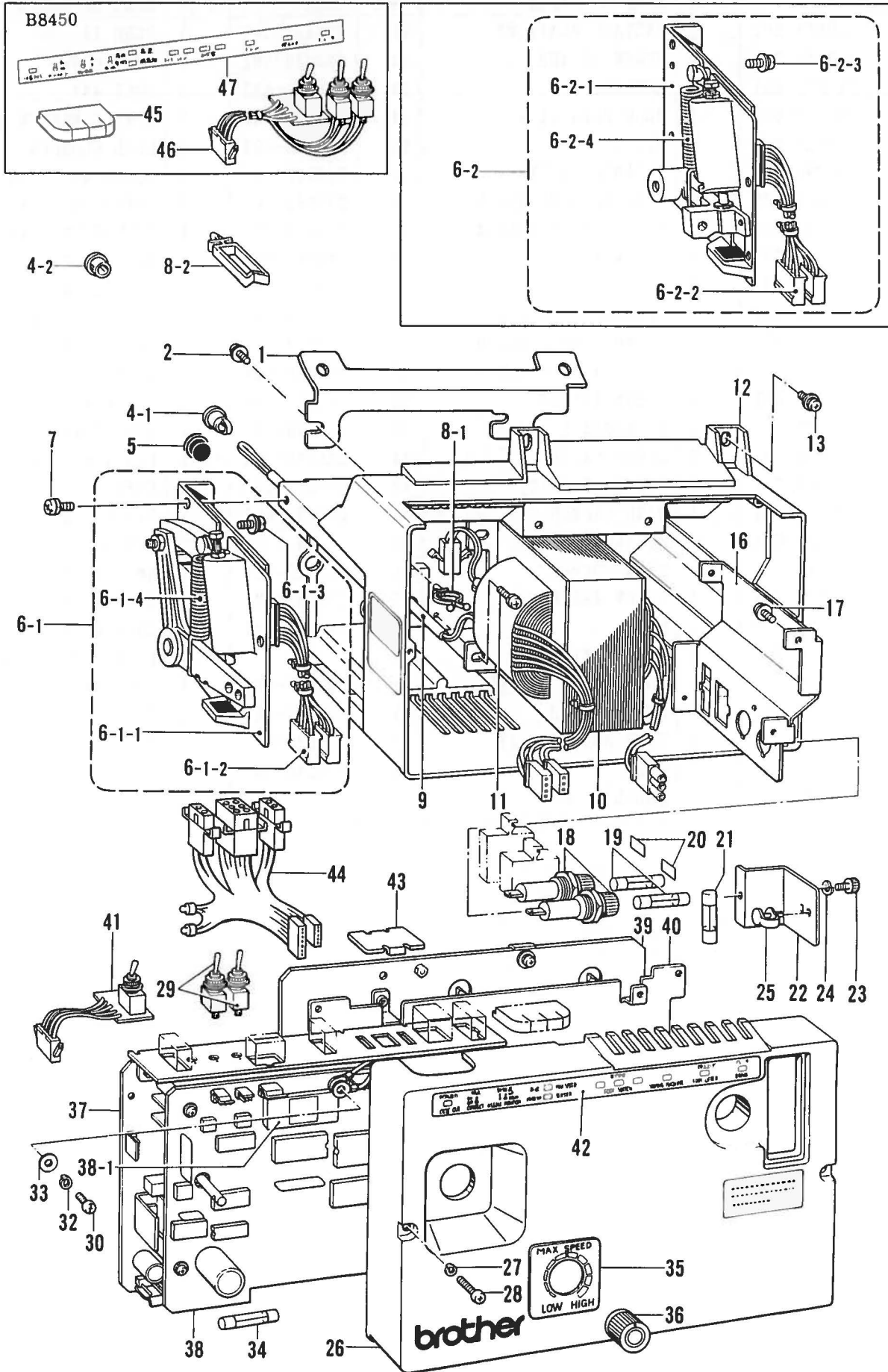
REF. NO.	CODE	Q' TY	NAME OF PARTS	REF. NO.	CODE	Q' TY	NAME OF PARTS
1	J00116-001	1	INSTALL PLATE#5	30	---	1	NAME PLATE
2	J00353-001	4	SCREW5X14D	31	J00121-001	1	DUST-PROOF NET
3	J00119-001	1	TRANS BOX	32	J00117-003	1	DC-BOX COVER#7(MARK II)
4-1	J00120-001	1	FUSE BASE#2	32	J00117-001	1	DC-BOX COVER#7(NBN)
4-2	J00901-001	1	FUSE BASE#2-1(LPW)	32	J00117-002	1	DC-BOX COVER#7
5	104821-001	1	OIL CAP	33	J00155-001	1	SCREW4X30DC
6	*	1	TRANSFORMER	34	J00653-001	1	WING BOLT4X10 (COV)
7	228284-001	1	T10X50 TUBE	35	J00440-001	1	SWITCH SEAL#10
8	216872-001	4	SCREW4X8DB				(MARK II, BAST)
9-1	215971-001	1	BUSH#61	35	J00165-001	1	SWITCH SEAL#11 (NBN)
9-2	232459-001	1	HOLE PLUG	35	J00239-001	1	SWITCH SEAL#12 (COV)
11	J00952-001	1	CLIP SLCS370-6N	35	J00650-001	1	SWITCH SEAL#14
12	J01370-001	1	FUSE ASSEMBLY#2				(LPW, PWB)
13	215822-000	1	FUSE (5A)	36	J00167-001	1	VR LABEL#12
14	J00074-001	1	FLAT CONNECT TERMINAL				(MARK II, NBN, LPW, PWB)
15-1	228290-001	1	PERSE LOCK-16	36	J00325-001	1	VR LABEL#14
15-2	229224-001	1	WIRE SADOLE				(BAST, COV)
16	J00118-001	1	FRONT BOX(S)	37	J00212-001	1	DCP-DISPOSE
17	J00179-001	8	SCREW 5X12DA				(MARK II, BAST, PWB, COV)
18	*	1	POWER CIRCUIT UNIT D	37	J00169-001	1	DCP-DISPOSE
19	*	2	FUSE HOLDER#2				(NBN, LPW)
20	*	2	FUSE	39-1	291790-002	1	TREADLE UNIT#11
21	J00025-001	5	HOLDER SPLS-6	39-1-1	231069-002	1	TREADLE BASE ASSEMBLY
22	215082-001	14	SCREW 4X12DA	39-1-2	291792-001	1	P-S CIRCUIT BOAD#5
23-1	233643-001	1	SITRMID 130F-050 (100~240V)	39-1-3	229017-001	6	SCREW4X10DA
				39-1-4	231080-001	1	SPRING#5
23-2	233644-001	1	SITRMID 130F-100 (380~415V)	39-2	291789-002	1	TREADLE UNIT#10
				39-2-1	228831-002	1	TREADLE BASE ASSEMBLY
24	233688-001	1	LABEL	39-2-2	291791-001	1	P-S CIRCUIT BOAD#4
25	*	1	CONTROL CIRCUIT UNIT S	39-2-3	229017-001	6	SCREW4X10DA
26	219225-000	1	FUSE (8A)	39-2-4	236207-001	1	SPRING#4-1
27	233193-001	1	BUSH	40	J00283-001	1	FUSE 15A-S (1 PHASE)
28	J00048-001	1	PLUG CAP	41	J00337-001	1	VR CONTROL KNOB K-8075
29	J00189-001	1	CONNECTOR#60 (OPTION)				

C. Control box / Schaltkasten / Mécanisme du boîtier de contrôle / Mecanismo del caja de controles (APM) (B845-900S) (ABL) (SBL)



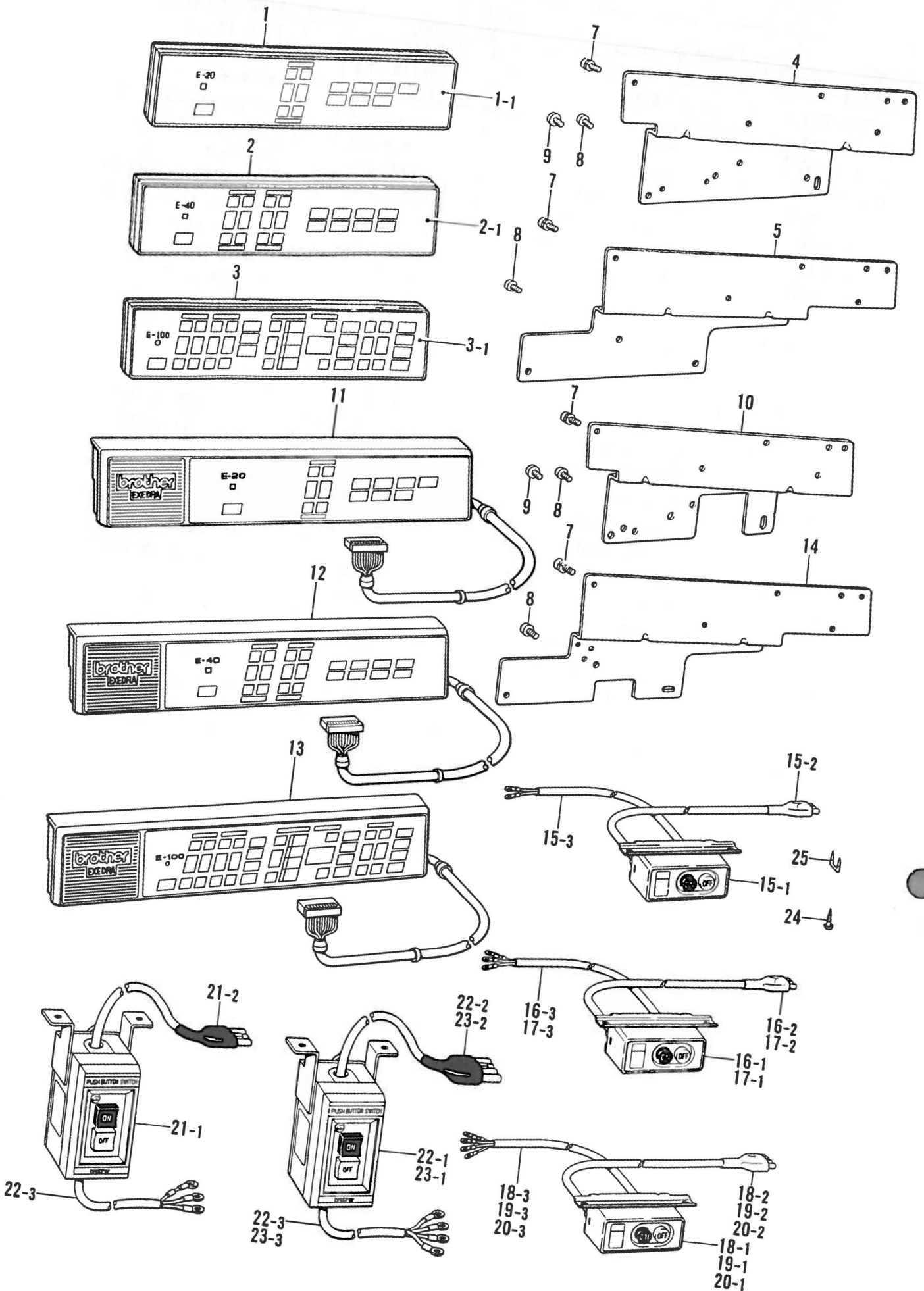
REF. NO.	CODE	Q' TY	NAME OF PARTS	REF. NO.	CODE	Q' TY	NAME OF PARTS
1	J00654-001	1	INSTALL PLATE #7	21	225432-001	1	FUSE 1A
2	J00353-001	4	SCREW 5X14DB	22	228280-002	1	FUSE COVER
4-1	215971-001	1	BUSH#61	23	018400-832	1	BOLT 4X8
4-2	232459-001	1	HOLE PLUG 11.1	24	028040-245	1	SPRING WASHER 2-4
5	104821-001	1	OIL CAP	25	216740-001	1	LEAD CLAMPER
6-1	291790-002	1	TREADLE UNITT#11	26	233121-007	1	COVER #3 (900S, ABL)
6-1-1	231069-002	1	TREADLE BASE ASSEMBLY	26	236682-001	1	COVER #3-1 (APM)
6-1-2	291792-001	1	P.S CIRCUIT BOARD#5	27	229559-001	1	VR LABEL#2 (900S)
6-1-3	229017-001	6	SCREW 4X10DA	27	236683-001	1	VR LABEL#7 (APM)
6-1-4	231080-001	1	SPRING#5	27	234079-001	1	VR LABEL#6 (ABL)
6-2	291798-002	1	TREADLE UNITT#10	28	221024-001	2	VR CONTROL KNOB
6-2-1	228831-002	1	TREADLE BASE ASSEMBLY	29	228324-001	2	VR SPACER
6-2-2	291791-001	1	P.S CIRCUIT BOARD#4	30	217093-001	2	SCREW 4X12D
6-2-3	229017-001	6	SCREW 4X10DA	32	062401-263	2	SCREW 4X12
6-2-4	236207-001	1	SPRING#4-1	33	028040-245	2	SPRING WASHER 2-4
7	216596-001	3	SCREW 5X10D	34	025040-173	2	PLAIN WASHER 4
8-1	228290-001	1	PARSE ROCK 16	35	219225-000	2	FUSE 8A
8-2	229224-001	1	WIRE SADDLE	36	228294-001	1	CIRCUIT SETTING PLATE
9	228284-001	1	T10X50 TUBE	37	*	1	CONTROL CIRCUIT UNIT
10	*	1	TRANSFORMER	38	233123-003	1	SWITCH SEAL (900S, APM)
11	216872-001	4	SCREW 4X8DB	38	234081-001	1	SWITCH SEAL (ABL)
12	228287-002	1	BOX	39	233193-001	1	CORD BUSH
13	J00353-001	2	SCREW 5X14DB	40	*	1	POWER CIRCUIT BOARD
16	—	1	CONNNECTOR BRACKET	41	235007-001	1	DPC SEAL (900s)
17	216872-001	2	SCREW 4X8DB	41	229558-002	1	DPC SEAL (APM, ABL)
18	*	2	FUSE HOLDER ASSY	42	J00048-001	1	PLUG CAP
19	*	2	FUSE	43	233146-001	1	CONNECTOR (OPTION)
20	*	1	LABEL				

D. Control box / Schaltkasten / Mécanisme du boîtier de contrôle /
 Mecanismo del caja de controles (B7380) (B7910) (B7740) (B8450)



REF. NO.	CODE	Q' TY	NAME OF PARTS	REF. NO.	CODE	Q' TY	NAME OF PARTS
1	J00654-001	1	INSTALL PLATE #7	21	225432-001	1	FUSE 1A
2	J00353-001	4	SCREW 5X14DB	22	228280-002	1	FUSE COVER
4-1	215971-001	1	BUSH#61	23	018400-832	1	BOLT 4X8
4-2	232459-001	1	HOLE PLUG 11.1	24	028040-245	1	SPRING WASHER 2-4
5	104821-001	1	OIL CAP	25	216740-001	1	LEAD CLAMPER
6-1	291442-002	1	TREADLE UNITT#8	26	228414-002	1	COVER #2
6-1-1	231069-002	1	TREADLE BASE ASSEMBLY	26	235029-002	1	COVER #2-2 (B8450)
6-1-2	291443-001	1	P.S CIRCUIT BOARD#8	27	028040-245	1	SPRING WASHER 2-4
6-1-3	229017-001	6	SCREW 4X10DA	28	228415-001	2	SCREW 4X45
6-1-4	231080-001	1	SPRING#5	29	234137-001	1	BT SWITCH ASSEMBLY#2
6-2	291281-002	1	TREADLE UNITT#7	30	062401-263	1	SCREW 4X12
6-2-1	228831-002	1	TREADLE BASE ASSEMBLY	32	028040-245	1	SPRING WASHER 2-4
6-2-2	291282-001	1	P.S CIRCUIT BOARD#7	33	025040-173	1	PLAIN WASHER 4
6-2-3	229017-001	6	SCREW 4X10DA	34	219225-000	1	FUSE 8A
6-2-4	236207-001	1	SPRING#4-1	35	229208-001	1	VR LABEL
7	216596-001	3	SCREW 5X10D	36	221024-001	1	VR CONTROL KNOB
8-1	228290-001	1	PARSE ROCK 16	37	*	1	CIRCUIT BOARD 470DB
8-2	229224-001	1	WIRE SADDLE	38	*	1	CIRCUIT BOARD 470C
9	228284-001	1	T10X50 TUBE	38-1	*	1	PROM
10	*	1	TRANSFORMER	39	*	1	POWER CIRCUIT BOARD
11	216872-001	4	SCREW 4X8DB	40	228294-001	1	CIRCUIT SEETING PLATE
12	228287-002	1	BOX	41	234030-001	1	SENSOR SW ASSEMBLY
13	J00353-001	2	SCREW 5X14DB	42	234060-001	1	SEAL
16	—	1	CONNNECTOR BRACKET	43	J00048-001	1	PLUG CAP
17	216872-001	2	SCREW 4X8DB	44	234136-001	1	CONNECTOR (OPTION)
18	*	2	FUSE HOLDER ASSY	45	235052-001	1	CORD BUSH#2 (B8450)
19	*	2	FUSE	46	235044-001	1	BT SWITCH ASSEMBLY#9
20	*	1	LABEL	47	235009-001	1	SEAL (B8450)

E. Operation panel, switch box mechanism / Schaltkasten /
 Boîtier d'interrupteurs / Caja de interruptores



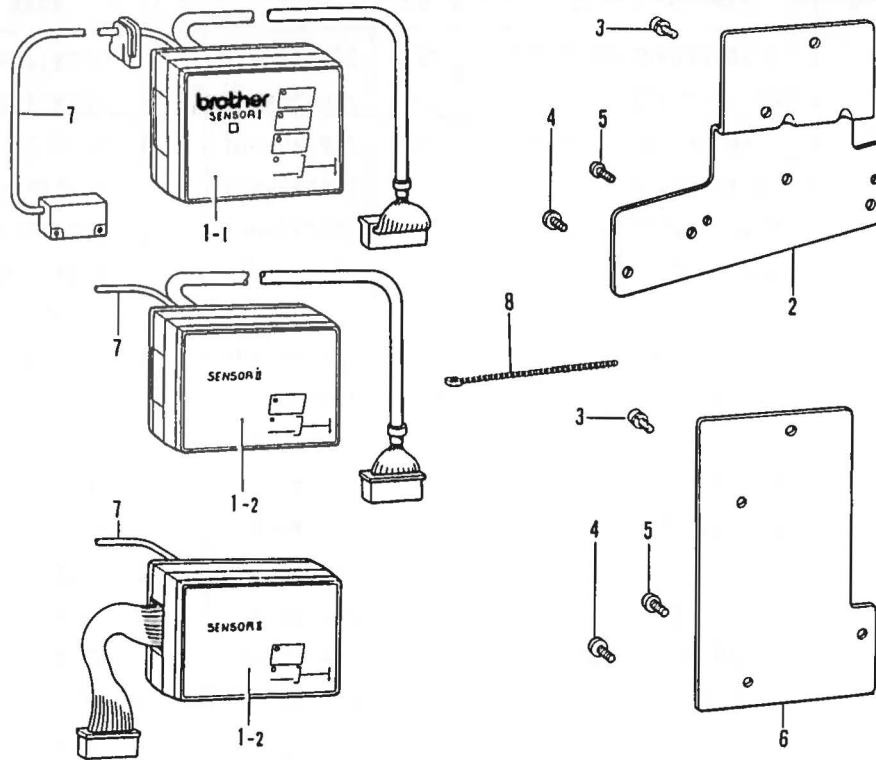
REF. NO.	CODE	Q' TY	NAME OF PARTS
1	*	1	E-20 OPERATION PANEL
1-1	233085-002	1	HB-20 PLATE
2	*	1	E-40 OPERATION PANEL
2-1	233079-002	1	HB-40 PLATE
3	*	1	E-100 OPERATION PANEL
3-1	233074-002	1	HBFC100-2 ASSEMBLY
4	233088-002	1	HB-SETTING PLATE#1
5	233090-002	1	HB-SETTING PLATE#3
7	215082-002	3	SCREW4X12DA
8	062681-212	3	SCREW437-40X12
9	060671-212	3	SCREW357-40X12
10	233089-002	1	HB-SETTING PLATE#2
11	*	1	E-20 OPERATION PANEL
12	*	1	E-40 OPERATION PANEL
13	*	1	E-100 OPERATION PANEL
14	234588-002	1	HB-SETTING PLATE#5

REF. NO.	CODE	Q' TY	NAME OF PARTS
15	229240-001	1	2PSWITCH ASSEMBLY#19-3
15-1	225539-001	1	2PSWITCH#19
15-2	228243-001	1	3P PLUG ASSEMBLY#10
15-3	229241-001	1	ELECTRIC SUPPLY CORD
16	229237-001	1	2PSWITCH ASSEMBLY#19-2
16-1	225539-001	1	2PSWITCH#19
16-2	229238-001	1	3P PLUG ASSEMBLY#10-2
16-3	229239-001	1	ELECTRIC SUPPLY CORD#2
17	230542-001	1	2PSWITCH ASSEMBLY#19-4
17-1	225539-001	1	2PSWITCH#19
17-2	230543-001	1	3P PLUG ASSEMBLY#10-3
17-3	229241-001	1	ELECTRIC SUPPLY CORD
18	229244-001	1	3PSWITCH ASSEMBLY#11-6
18-1	224510-001	1	3PSWITCH#11
18-2	229245-001	1	4P PLUG ASSEMBLY#11-3
18-3	229246-001	1	ELECTRIC SUPPLY CORD#5
19	229250-001	1	3PSWITCH ASSEMBLY#11-7
19-1	224510-001	1	3PSWITCH#11
19-2	228272-001	1	4P PLUG ASSEMBLY#11
19-3	224513-001	1	ELECTRIC SUPPLY CORD#3
20	230545-001	1	3PSWITCH ASSEMBLY#11-8
20-1	224510-001	1	3PSWITCH#11
20-2	230546-001	1	4P PLUG ASSEMBLY#11-5
20-3	230547-001	1	ELECTRIC SUPPLY CORD
21	230548-001	1	2PSWITCH ASSEMBLY#16-2
21-1	223739-001	1	2PSWITCH#16
21-2	235533-001	1	3P PLUG ASSEMBLY#10-4
21-3	233534-001	1	ELECTRIC SUPPLY CORD
22	230443-001	1	3PSWITCH ASSEMBLY#9-11
22-1	223738-001	1	3PSWITCH#9-3
22-2	230444-001	1	4P PLUG ASSEMBLY#11-4
22-3	230445-001	1	ELECTRIC SUPPLY CORD
23	230549-001	1	3PSWITCH ASSEMBLY#9-12
23-1	215504-001	1	3PSWITCH#9
23-2	230550-001	1	4P PLUG ASSEMBLY#11-6
23-3	230551-001	1	ELECTRIC SUPPLY CORD#7
24	S03816-001	2	SCREW4.5X16
25	200190-001	5	STEPLE

MACHINE MODEL	REF. NO.	OPERATIN PANEL	
		SAPPLY PARTS NO.	
B737 MARK II	F-11	E-20	137-208-711-11
	F-12	E-40	137-208-712-11
	F-13	E-100	137-208-713-11
B748, 791, 798 B774, 795, B842, 872 (TWIN NEEDLE) B852, 853, 854	F-1	E-20	137-208-711-20
	F-2	E-40	137-208-712-20
	F-3	E-100	137-208-713-20

* Use the replacement part product code number given in the teble belpw for parts marked with an asterisk(*).

F. Material edge sensor related (option) (1) / Für Materialkantensensor (Sonderausstattung) (1) /
 Capteur de bord de tissu relatif (en option) (1) /
 Piezas relacionadas al detector de borde de tejidos (opcional) (1)



SENSOR

MACHINE MODEL	S I (E - 0)		S II (E-20 ~ E-100)	
	NAME OF PARTS	CODE	NAME OF PARTS	CODE
B737 Mark II	SWNSOR#1-1	291655-011	SENSOR#2-2	291657-011
B748			SENSOR#2-1	291659-011
TWIN NEEDLE	SENSOR#1-3	291673-011	SENSOR#2-3	291674-011
B791	SENSOR#1-4	291656-011	SENSOR#2-4	291640-011
B798	SENSOR#1-6	291744-011	SENSOR#2-6	291642-011
B774	SENSOR#1-7	388707-011	SENSOR#2-7	388706-011

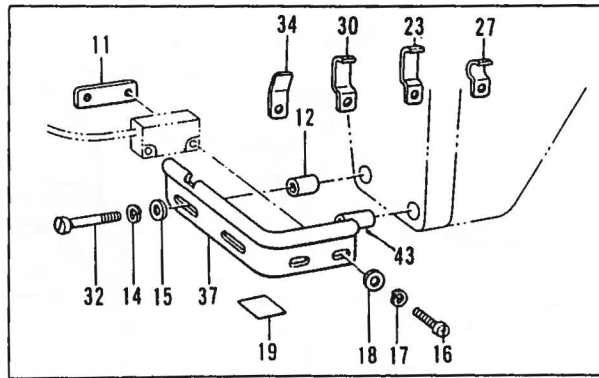
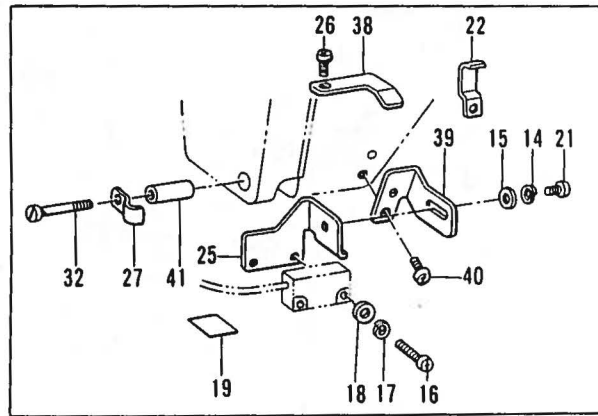
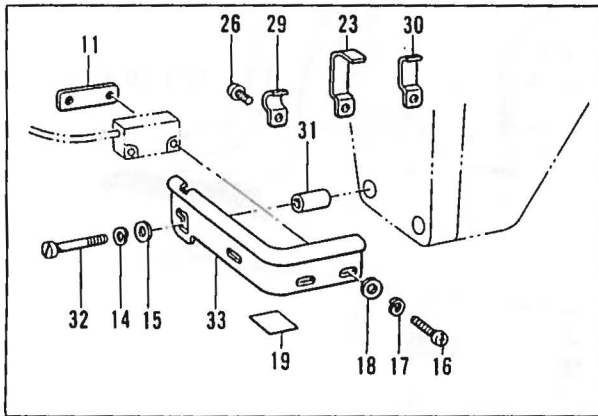
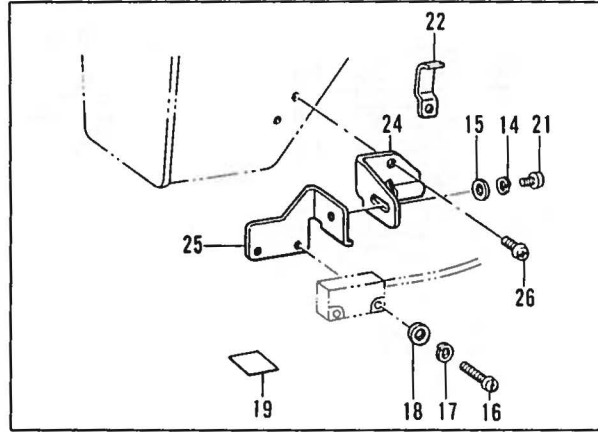
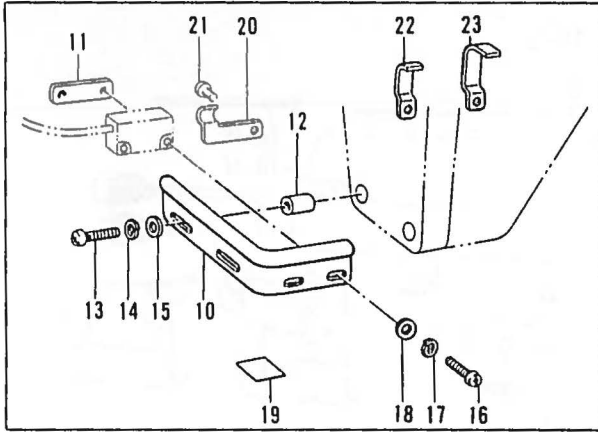
DIFFERENT PARTS LIST
 SENSOR I

REF. NO.	MACHINE MODEL	Mark II	B 7 4 8	2 NEEDLE	B 7 9 1	B 7 9 8	B 7 7 4
	NAME OF SENSOR	#1-1	#1-3	#1-4	#1-6	#1-7	
1-1	EMBLEM PLATE	233258-002					
7	SENSOR CORD ASS.	233263-001		233619-001	233263-001		
3	SCREW 4X12DA	215082-002					
2	SETTING PLATE	237043-002		233093-002			233093-002
6	SETTING PLATE				233603-002		
4	SCREW 357-40X12				060671-212		
5	SCREW 437-40X12	062681-212					
8	TYING BAND N-108	233501-001					

SENSOR II

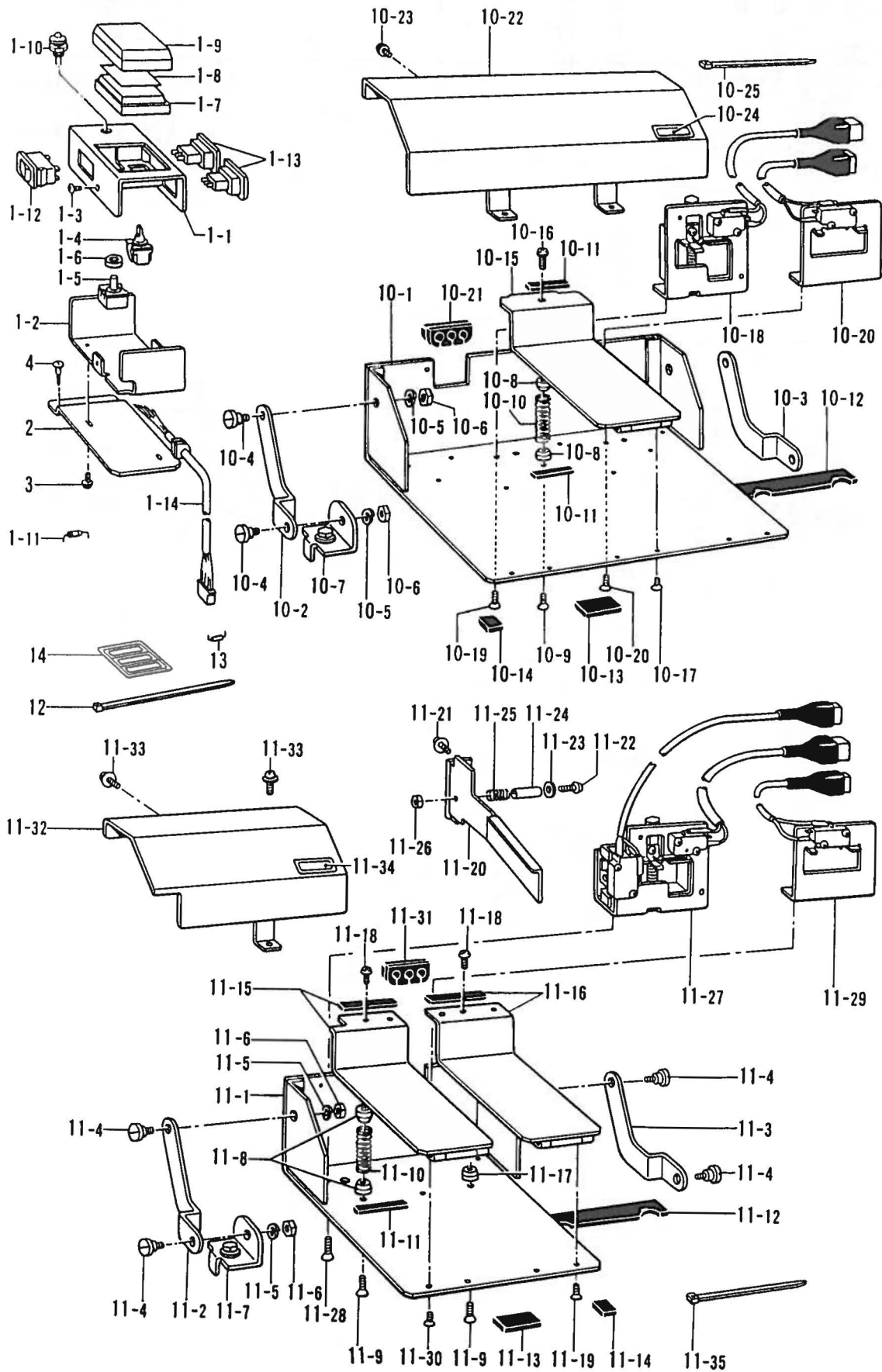
REF. NO.	MACHINE MODEL	Mark II	B 7 4 8	(2 本 針)	B 7 9 1	B 7 9 8	B 7 7 4
	NAME OF SENSOR	#2-2	#2-1	#2-3	#2-4	#2-6	#2-7
1-1	EMBLEM PLATE	233268-002					
7	SENSOR CORD ASS.	233263-001		233619-001	233263-001		
3	SCREW 4X12DA	215082-002					
2	SETTING PLATE	237043-002					
5	SCREW 437-40X12	062681-212					
8	TYING BAND N-108	233501-001					

G. Material edge sensor related (option) (2) / Für Materialkantensensor (Sonderausstattung) (2) /
 Capteur de bord de tissu relatif (en option) (2) /
 Piezas relacionadas al detector de borde de tejidos (opcional) (2)



REF. NO.	CODE	Q' TY	NAME OF PARTS	REF. NO.	CODE	Q' TY	NAME OF PARTS
10	233091-002	1	SENSOR PLATE	25	233544-001	1	SENSOR SETTING PLATE#3
11	233092-001	1	SENSOR SETTING PLATE	26	062680-812	2	SCREW 437-40X8
12	233067-001	2	SENSOB STTING COLLAR	27	S02701-001	2	CORD HOLDER#U1
13	062672-012	2	SCREW 357-40X20	29	233604-001	1	CORD HOLDER#2
14	028350-242	2	SPRING WASHER 2-3.5	30	142268-001	2	CODER HOLDER#L
15	026350-132	2	WASHER 3.5	31	233575-001	2	SENSOR SETTING COLLAR#2
16	062301-402	2	SCREW 3X14	32	151431-001	2	SCREW 3.57
17	028030-242	2	SPRING WASHER 2-3	33	233573-001	1	SENSOR PLATE#B791
18	025030-132	2	WASHER 3	34	233618-001	1	CORD HOLDER#3
19	233063-001	1	ALUMI SHEET	37	233574-001	1	SENSOR PLATE#B793
20	233500-001	1	CORD HPLDER	38	233696-001	1	CORD HOLDER#4
21	062670-612	1	SCREW 357-40X6	39	233694-001	1	SENSOR PLATE#B798
22	S02702-001	2	CORD HOLDER#U2	40	062670-812	1	SCREW 375-40X8
23	S02703-001	2	CORD HPLDER#U3	41	233695-001	1	SENSOR SETTING COLLAR#3
24	233545-001	1	SENSOR HOLDER#A	43	236315-001	1	SENSOR COLLAR 17.5

H. Production counter, pedal for standing operation / Stückzähler Fusstritt für stehenden Arbeitsplatz /
 Compteur de-production pédale pour opération en station debto /
 Contador de producción pedal para operar de pie



PRODUCTION COUNTER

REF. NO.	CODE	Q' TY	NAME OF PARTS
1	291660-002	1	PRODUCTION COUNTER
1-1	233198-002	1	P. C CLAMP PLATE
1-2	233201-002	1	P. C BRACKET
1-3	061300-605	3	SCREW 3X6
1-4	233203-001	1	PUSH SWITCH
1-5	233204-001	1	PIN
1-6	233205-001	1	CUSHION RUBBER
1-7	233206-001	1	KEY TOP 35X35
1-8	233207-001	1	KEY TOP COVER
1-9	233208-001	1	PUSH PLATE
1-10	233202-001	1	DISPLAY LAMP
1-11	090181-120	1	DR-A14YJ18
1-12	233209-001	1	SELECTOR SWITCH
1-13	233210-001	2	PUSH SWITCH#2
1-14	233211-001	1	P. C CORD ASSEMBLY
2	233378-002	1	P. C SETTIG PLATE
3	233236-001	2	SCREW 4X6DA
4	031311-302	2	SCREW 3.1X13

**PEDAL FOR STANDING OPERATION
(VARIABLE SPEED TYPE) (TWO SPEED TYPE)**

REF. NO.	CODE	Q' TY	NAME OF PATRS
10	*	1	PEDAL ASSEBLY
10-1	233217-002	1	PEDAL BASE ASSEMBLY
10-2	233221-003	1	ARM CLAMP#L
10-3	233222-003	1	ARM CLAMP#R
10-4	233223-001	4	STUD SCTRE 8X16.7
10-5	028080-242	4	SPRING WASHER 2-8
10-6	021080-302	4	NUT 8
10-7	233224-002	2	PEDAL CLAMP ASSEMBLY
10-8	233231-001	6	SPRING CUSHION#23
10-9	061401-205	3	SCREW 4X12
10-10	233233-001	3	SPRING 1. 2X12X57
10-11	233232-001	6	RUBBER PLATE1. 6X5X45
10-12	233228-001	1	RUBBER PLATE3. 2X20X286
10-13	233229-001	2	RUBBER PLATE3. 2X20X46
10-14	233230-001	2	RUBBER PLATE3. 2X20X15
10-15	233225-001	3	PEDAL ASSEMBLY
10-16	217093-001	3	SCREW 4X12D
10-17	061400-402	6	SCREW 4X4
10-18	*	1	SPEED CONTROLLER
10-19	061400-205	6	SCREW 4X12
10-20	233246-001	2	M. SWITCH ASSEMBLY
10-21	233250-001	1	F. P BUSH
10-22	233251-003	1	PEDAL COVER
10-23	233235-001	4	SCREW 4X6DA
10-24	*	1	IDENTIFICATION LABEL
10-25	228475-000	2	TYING BAND 1. 9X80

**PEDAL FOR STANDING OPERATION
(SIDE ACTION AND VARIABLE SPEED TYPE)**

REF. NO.	CODE	Q' TY	NAME OF PARTS
11	385266-040	1	PEDAL (THREAD TRIM
11-1	238194-001	1	PEDAL BASE ASSEMBLY#5
11-2	233221-003	1	ARM CLAMP#L
11-3	233222-003	1	ARM CLAMP#R
11-4	233223-001	4	STUD SCTRE 8X16.7
11-5	028080-242	4	SPRING WASHER 2-8
11-6	021080-302	4	NUT 8
11-7	233224-002	2	PEDAL CLAMP ASSEMBLY
11-8	233231-001	2	SPRING CUSHION#23
11-9	061401-205	2	SCREW 4X12
11-10	233233-001	2	SPRING 1. 2X12X57
11-11	233232-001	2	RUBBER PLATE1. 6X5X45
11-12	S14823-001	1	RUBBER PLATE3. 2X20X186
11-13	233229-001	1	RUBBER PLATE3. 2X20X46
11-14	233230-001	2	RUBBER PLATE3. 2X20X15
11-15	238186-001	1	PEDAL ASSEMBLY (SPEED)
11-16	238188-001	1	PEDAL ASSEMBLY PRESSER
11-17	233231-001	2	SPRING CUSHION#23
11-18	217093-001	2	SCREW 4X12D
11-19	061400-402	4	SCREW 4X4
11-20	238191-001	1	PEDAL TRIMMER ASS. #2
11-21	225534-001	2	SCREW 4X8DA
11-22	062402-005	1	SCREW 4X20
11-23	025040-335	1	WASHER 4
11-24	J00021-001	1	TUBE T5X12
11-25	228957-001	1	SPRING8X30
11-26	021400-305	1	NUT 4
11-27	J00022-001	1	SPEED CONTROLLER#5
11-28	061401-205	2	SCREW 4X12
11-29	233246-001	1	M. SWITCH ASSEMBLY
11-30	061401-205	2	SCREW 4X12
11-31	233250-001	1	F. P BUSH
11-32	238196-001	1	PEDAL COVER#5
11-33	233236-001	3	SCREW 4X6DA
11-34	233487-002	1	IDENTIFICATION LABEL
11-35	228475-000	2	TYING BAND1. 9X80
12	233491-001	2	TYING BAND3. 6X203
13	200190-001	4	STEPLE
14	233515-001	1	LABEL

DIFFERENT PARTS LIST

REF. NO.	VARIABLE TYPE	TWO SPEED TYPE
10	291661-043	291662-003
10-18	233234-001	233494-001
10-24	233487-002	233488-002

DIFFERENT PARTS LIST, CONTROL BOX FOR SUPPLY LIST / ZUBEHÖRLISTE /
LISTE DES PIÈCES ACCESSOIRES / LISTA DE PIEZAS ACCESORIAS

Machine Model		Mark II								
Ref.No.	Sub-Class	Single Phase					Three Phase			
	Voltage (V)	110	120	220	230	240	220	380	415	
A-7	Bracket Assembly (L) #3	J00109-001					J00110-001			
A-12	DC.Motor Assembly	J80069-001 (A)					J80070-001 (A)	J80071-001 (B)		
A-19	Rotor	231004-001					231018-001			
A-50	Pulley	228840-000 M 80-1								
		228237-001 M 90-1								
		228839-001 M 105-2								
		231017-001 M 125-2								
B-6	Trans Former	6V	229963-001	236126-001	229643-001	229645-001	229646-001	229643-001	229561-001	230214-001
		12V	————	————	230660-001	————	231335-001	230660-001	229623-001	229644-001
		NIL	————	————	J01166-001	————	J01183-001	J01166-001	J01197-001	J01215-001
B-15	Perse Rock-16	228290-001					229224-001			
B-18	Power Circuit Unit	J80116-001	J80115-001	J80117-001		J80118-001	J80119-001			
B-19	Fuse Holder Assembly	————					224087-001 (Q'ty2)			
B-20	Fuse	————		————		215822-000 (5A) (Q'ty2)	215769-001 (3A) (Q'ty2)			
B-25	Control Circuit Unit	J80090-001		J80091-001		J80092-001	J80093-001			
B-30	Label	————		————		J00288-001	J00312-001			
B-39-1	Treadle Unit Assembly #11	291790-002								
B-39-1-2	P-S Circuit Board #11	291792-001								
B-39-1-4	Treadle Spring #5	231080-001								
B-39-2	Treadle Unit Assembly #10	291789-002								
B-39-2-2	P-S Circuit Board #10	291791-001								
B-39-2-4	Treadle Spring #4-1	236207-001								
E-15 E-23	Switch Assembly	229240-001		229237-001		229250-001	229244-001			
		230548-001 (USA)		231854-001 (OCR)		236127-001 (Australia)	230443-001 (OCR)	230549-001 (OCR)		
		230542-001 (Canada)		————		230545-001 (Canada)	————			

Machine Model		B730 (NBN)								
Ref.No.	Sub-Class	Single Phase					Three Phase			
	Voltage (V)	110	120	220	230	240	220	380	415	
A-7	Bracket Assembly (L) #3	J00109-001					J00110-001			
A-12	DC.Motor Assembly	J80069-001 (A)					J80070-001 (A)	J80071-001 (B)		
A-19	Rotor	231004-001					231018-001			
A-50	Pulley	228840-000 M 80-1								
		228237-001 M 90-1								
		228839-001 M 105-2								
		231017-001 M 125-2								
B-6	Trans Former	6V	229963-001	236126-001	229643-001	229645-001	229646-001	229643-001	229561-001	230214-001
		12V	_____	_____	230660-001	_____	231335-001	230660-001	229623-001	229644-001
		NIL	_____	_____	J01166-001	_____	J01183-001	J01166-001	J01197-001	J01215-001
B-15	Perse Rock-16	228290-001					229224-001			
B-18	Power Circuit Unit	J80116-001	J80115-001	J80117-001			J80118-001	J80119-001		
B-19	Fuse Holder Assembly	_____					224087-001 (Q'ty2)			
B-20	Fuse	_____		_____			215822-000 (5A) (Q'ty2)	215769-001 (3A) (Q'ty2)		
B-25	Control Circuit Unit	J80095-001		J80096-001			J80097-001	J80098-001		
B-30	Label	_____		_____			J00288-001	J00312-001		
B-39-1	Treadle Unit Assembly #11	291790-002								
B-39-1-2	P - S Circuit Board #11	291792-001								
B-39-1-4	Treadle Spring #5	231080-001								
B-39-2	Treadle Unit Assembly #10	291789-002								
B-39-2-2	P - S Circuit Board #10	291791-001								
B-39-2-4	Treadle Spring #4-1	236207-001								
E-15 { E-23	Switch Assembly	229240-001		229237-001			229250-001	229244-001		
		230548-001 (USA)		231854-001 (OCR)		236127-001 (Australia)	230443-001 (OCR)	230549-001 (OCR)		
		230542-001 (Canada)		_____			230545-001 (Canada)	_____		

Machine Model		B883 (BAST)								
Ref.No.	Sub-Class	Single Phase					Three Phase			
	Voltage (V)	110	120	220	230	240	220	380	415	
A-7	Bracket Assembly (L) #3	J00109-001					J00110-001			
A-12	DC Motor Assembly	J80069-001 (A)					J80070-001 (A)	J80071-001 (B)		
A-19	Rotor	231004-001					231018-001			
A-50	Pulley	228840-000 M 80-1								
		228237-001 M 90-1								
		228839-001 M 105-2								
		231017-001 M 125-2								
B-6	Trans Former	6V	229963-001	236126-001	229643-001	229645-001	229646-001	229643-001	229561-001	230214-001
		12V	_____	_____	230660-001	_____	231335-001	230660-001	229623-001	229644-001
		NIL	_____	_____	J01166-001	_____	J01183-001	J01166-001	J01197-001	J01215-001
B-15	Perse Rock-16	228290-001					229224-001			
B-18	Power Circuit Unit	J80116-001	J80115-001	J80117-001			J80118-001	J80119-001		
B-19	Fuse Holder Assembly	_____					224087-001 (Q'ty2)			
B-20	Fuse	_____			_____		215822-000 (5A) (Q'ty2)	215769-001 (3A) (Q'ty2)		
B-25	Control Circuit Unit	J80100-001			J80101-001		J80102-001	J80103-001		
B-30	Label	_____			_____		J00288-001	J00312-001		
B-39-1	Treadle Unit Assembly #11	291790-002								
B-39-1-2	P-S Circuit Board #11	291792-001								
B-39-1-4	Treadle Spring #5	231080-001								
B-39-2	Treadle Unit Assembly #10	291789-002								
B-39-2-2	P-S Circuit Board #10	291791-001								
B-39-2-4	Treadle Spring #4-1	236207-001								
E-15 { E-23	Switch Assembly	J00452-001			J00460-001		J00470-001	J00468-001		
		J00453-001 (USA)			J00462-001 (OCR)		J00464-001 (Australia)	J00471-001 (OCR)	J00475-001 (OCR)	
		J00455-001 (Canada)			_____		J00473-001 (Canada)	_____		

Machine Model		P62, P64							
Ref.No.	Sub-Class	Single Phase					Three Phase		
	Voltage (V)	110	120	220	230	240	220	380	415
A-7	Bracket Assembly (L) #3	J00109-001					J00110-001		
A-12	DC Motor Assembly	J80069-001 (A)					J80070-001 (A)	J80071-001 (B)	
A-19	Rotor	231004-001					231018-001		
A-50	Pulley	228840-000 M 80-1							
		228237-001 M 90-1							
		228839-001 M 105-2							
		231017-001 M 125-2							
B-6	Trans Former	6V	_____	J00718-001	_____	J00718-001	J00719-001	J00721-001	
		12V	_____	J00717-001	_____	J00717-001	J00700-001	J00720-001	
		NIL	_____	J01293-001	_____	J01293-001	J01294-001	J01295-001	
B-15	Perse Rock-16	228290-001					229224-001		
B-18	Power Circuit Unit	J80116-001	J80115-001	J80117-001		J80118-001	J80119-001		
B-19	Fuse Holder Assembly	_____					224087-001 (Q'ty2)		
B-20	Fuse	_____	_____	_____	_____	215822-000 (5A) (Q'ty2)	215769-001 (3A) (Q'ty2)		
B-25	Control Circuit Unit	J80315-001		J80316-001		J80109-001	J80110-001		
B-30	Label	_____	_____	_____	_____	J00288-001	J00312-001		
B-39-1	Treadle Unit Assembly #11	291790-002							
B-39-1-2	P · S Circuit Board #11	291792-001							
B-39-1-4	Treadle Spring #5	231080-001							
B-39-2	Treadle Unit Assembly #10	291789-002							
B-39-2-2	P · S Circuit Board #10	291791-001							
B-39-2-4	Treadle Spring #4-1	236207-001							
E-15 { E-23	Switch Assembly	229240-001		229237-001		229250-001	229244-001		
		230548-001 (USA)		231854-001 (OCR)		236127-001 (Australia)	230443-001 (OCR)	230549-001 (OCR)	
		230542-001 (Canada)		_____		230545-001 (Canada)	_____		

Machine Model		C51, P73, P81								
Ref. No.	Sub-Class	Single Phase					Three Phase			
	Voltage (V)	110	120	220	230	240	220	380	415	
A-7	Bracket Assembly (L) #3	J00109-001					J00110-001			
A-12	DC Motor Assembly	J80069-001 (A)					J80070-001 (A)	J80071-001 (B)		
A-19	Rotor	231004-001					231018-001			
A-50	Pulley	228840-000 M 80-1								
		228237-001 M 90-1								
		228839-001 M 105-2								
		231017-001 M 125-2								
B-6	Trans Former	6V	229963-001	236126-001	229643-001	229645-001	229646-001	229643-001	229561-001	230214-001
		12V	_____	_____	230660-001	_____	231335-001	230660-001	229623-001	229644-001
		NIL	_____	_____	J01166-001	_____	J01183-001	J01166-001	J01197-001	J01215-001
B-15	Perse Rock-16	228290-001					229224-001			
B-18	Power Circuit Unit	J80116-001	J80115-001	J80117-001			J80118-001	J80119-001		
B-19	Fuse Holder Assembly	_____					224087-001 (Q'ty2)			
B-20	Fuse	_____			_____		215822-000 (5A) (Q'ty2)	215769-001 (3A) (Q'ty2)		
B-25	Control Circuit Unit	J80318-001			J80111-001		J80112-001	J80113-001		
B-30	Label	_____			_____		J00288-001	J00312-001		
B-39-1	Treadle Unit Assembly #11	291790-002								
B-39-1-2	P-S Circuit Board #11	291792-001								
B-39-1-4	Treadle Spring #5	231080-001								
B-39-2	Treadle Unit Assembly #10	291789-002								
B-39-2-2	P-S Circuit Board #10	291791-001								
B-39-2-4	Treadle Spring #4-1	236207-001								
E-15 { E-23	Switch Assembly	229240-001			229237-001		229250-001	229244-001		
		230548-001 (USA)			231854-001 (OCR)		236127-001 (Australia)	230443-001 (OCR)	230549-001 (OCR)	
		230542-001 (Canada)			_____		230545-001 (Canada)	_____		

Machine Model		COV								
Ref.No.	Sub-Class	Single Phase					Three Phase			
	Voltage (V)	110	120	220	230	240	220	380	415	
A-7	Bracket Assembly (L) #3	J00109-001					J00110-001			
A-12	DC.Motor Assembly	J80321-001 (AR)					J80073-001 (AR)	J80074-001 (BR)		
A-19	Rotor	231006-001					231007-001			
A-50	Pulley	228840-000 M 80-1								
		228237-001 M 90-1								
		228839-001 M 105-2								
		231017-001 M 125-2								
B-6	Trans Former	6V	229963-001	236126-001	229643-001	229645-001	229646-001	229643-001	229561-001	230214-001
		12V	————	————	230660-001	————	231335-001	230660-001	229623-001	229644-001
		NIL	————	————	J01166-001	————	J01183-001	J01166-001	J01197-001	J01215-001
B-15	Perse Rock-16	228290-001					229224-001			
B-18	Power Circuit Unit	J80116-001	J80115-001	J80117-001			J80118-001	J80119-001		
B-19	Fuse Holder Assembly	————					224087-001 (Q'ty2)			
B-20	Fuse	————			————		215822-000 (5A) (Q'ty2)	215769-001 (3A) (Q'ty2)		
B-25	Control Circuit Unit	J80105-001			J80106-001		J80107-001	J80108-001		
B-30	Label	————			————		J00288-001	J00312-001		
B-39-1	Treadle Unit Assembly #11	291790-002								
B-39-1-2	P-S Circuit Board #11	291792-001								
B-39-1-4	Treadle Spring #5	231080-001								
B-39-2	Treadle Unit Assembly #10	291789-002								
B-39-2-2	P-S Circuit Board #10	291791-001								
B-39-2-4	Treadle Spring #4-1	236207-001								
E-15 { E-23	Switch Assembly	229240-001			229237-001		229250-001	229244-001		
		230548-001 (USA)			231854-001 (OCR)		236127-001 (Australia)	230443-001 (OCR)	230549-001 (OCR)	
		230542-001 (Canada)			————		230545-001 (Canada)	————		

Machine Model		B845 – 9005								
Ref.No.	Sub-Class	Single Phase					Three Phase			
	Voltage (V)	110	120	220	230	240	220	380	415	
A-7	Bracket Assembly (L) #3	J00109-001					J00110-001			
A-12	DC.Motor Assembly	J80069-001 (A)				J80070-001 (A)	J80071-001 (B)			
A-19	Rotor	231006-001					231018-001			
A-50	Pulley	228840-001 M 80-1								
C-6-1	Treadle Unit Assembly #11	291790-002								
C-6-1-1	Circuit Board #11	291792-001								
C-6-1-4	Treadle Spring #5	231080-001								
C-6-2	Treadle Unit Assembly #10	291789-002								
C-6-2-1	Circuit Board #10	291791-001								
C-6-2-4	Treadle Spring #4-1	236207-001								
C-8	Perse Rock-16	228290-001						229224-001		
C-10	Trans Former	6V	229963-001	236126-001	229643-001	229645-001	229646-001	229643-001	229561-001	230214-001
		12V	_____		230660-001	_____	231335-001	230660-001	229623-001	229644-001
		NIL	_____		J01166-001	_____	J01183-001	J01166-001	J01197-001	J01215-001
C-18	Fuse Holder Assembly	225433-001 (Q'ty1)					224087-001 (Q'ty2)			
C-19	Fuse	218469-001 (15A) (Q'ty1)		219255-001 (8A) (Q'ty1)		215822-000 (5A) (Q'ty2)	215769-001 (3A) (Q'ty2)			
C-20	Label	224090-001		233638-001		224089-001	229160-001			
C-37	Control Circuit Unit	388260-110		388260-123		388260-323	388260-340			
C-40	Power Circuit Unit	291273-101	J80120-101	291274-101		291275-101	291276-101			
E-15 } E-23	Switch Assembly	229240-001		229237-001		229250-001	229244-001			
		230548-001 (USA)		231854-001 (OCR)	236127-001 (Australia)	230443-001 (OCR)	230549-001 (OCR)			
		230544-001 (Canada)		_____		230545-001 (Canada)	_____			

Machine Model		(APM)									
Ref.No.	Sub-Class	Single Phase					Three Phase				
	Voltage (V)	110	120	220	230	240	220	380	415		
A-7	Bracket Assembly (L) #3	J00109-001					S00110-001				
A-12	DC.Motor Assembly	J80069-001 (A)				J80070-001 (A)	J80071-001 (B)				
A-19	Rotor	231004-001					231018-001				
A-50	Pulley	228839-001 M 105-1									
C-6-1	Treadle Unit Assembly #11	291790-002									
C-6-1-1	Circuit Board #11	291792-001									
C-6-1-4	Treadle Spring #5	231080-001									
C-6-2	Treadle Unit Assembly #10	291789-002									
C-6-2-1	Circuit Board #10	291791-001									
C-6-2-4	Treadle Spring #4-1	236207-001									
C-8	Perse Rock-16	228290-001						229224-001			
C-10	Trans Former	6V	229963-001	236126-001	229643-001	229645-001	229646-001	229643-001	229561-001	230214-001	
		12V	—————		230660-001	—————	231335-001	230660-001	229623-001	229644-001	
		NIL	—————		J01166-001	—————	J01183-001	J01166-001	J01197-001	J01215-001	
C-18	Fuse Holder Assembly	225433-001 (Q'ty1)					224087-001 (Q'ty2)				
C-19	Fuse	218469-001 (5A) (Q'ty1)			219225-000 (8A) (Q'ty1)		215822-000 (5A) (Q'ty2)	215769-001 (3A) (Q'ty2)			
C-20	Label	224090-001			233638-001		224089-001	229160-001			
C-37	Control Circuit Unit	J80122-110			J80122-123		J80122-323	J80122-340			
C-40	Power Circuit Unit	291273-101	J80120-101	291274-101			291275-101	291276-101			
E-15 { E-23	Switch Assembly	229240-001			229237-001		229250-001	229244-001			
		230548-001 (USA)			231854-001 (OCR)		236127-001 (Australia)	230443-001 (OCR)	230549-001 (OCR)		
		230542-001 (Canada)			—————		230545-001 (Canada)	—————			

Machine Model		(LOCK-ABL · SBL)							
Ref.No.	Sub-Class	Single Phase					Three Phase		
	Voltage (V)	110	120	220	230	240	220	380	415
A-7	Bracket Assembly (L) #3	J00109-001					J00110-001		
A-12	DC.Motor Assembly	J80321-001 (AR)					J80073-001 (AR)	J80074-001 (BR)	
A-19	Rotor	231006-001					231007-001		
A-50	Pulley	231017-001 M 125-2							
C-6-1	Treadle Unit Assembly #11	291790-002							
C-6-1-1	Circuit Board #11	291792-001							
C-6-1-4	Treadle Spring #5	231080-001							
C-6-2	Treadle Unit Assembly #10	291789-002							
C-6-2-1	Circuit Board #10	291791-001							
C-6-2-4	Treadle Spring #4-1	236207-001							
C-8	Perse Rock-16	228290-001					229224-001		
C-10	Trans Former	6V	229963-001	229643-001	229645-001	229646-001	229643-001	229561-001	230214-001
		12V	————	230660-001	————	231335-001	230660-001	229623-001	229644-001
		NIL	————	J00116-001	————	J01183-001	J01166-001	J01197-001	J01215-001
C-18	Fuse Holder Assembly	225433-001 (Q'ty1)					224087-001 (Q'ty2)		
C-19	Fuse	218469-001 (5A) (Q'ty1)		219255-001 (8A) (Q'ty1)		215822-000 (5A) (Q'ty2)	215769-001 (3A) (Q'ty2)		
C-20	Label	224090-001		233638-001		224089-001	229160-001		
C-37	Control Circuit Unit	291784-110		291784-123		291784-323	291784-340		
C-40	Power Circuit Unit	291273-101	J80120-101	291274-101		291275-101	291276-101		
E-15 E-23	Switch Assembly	229240-001		229237-001		229250-001	229244-001		
		230548-001 (USA)		231854-001 (Australia)		236127-001 (Australia)	230443-001 (OCR)	230549-001 (OCR)	
		230542-001 (Canada)		————		230545-001 (Canada)	————		

Machine Model		B7380							
Ref.No.	Sub-Class	Single Phase					Three Phase		
	Voltage (V)	110	120	220	230	240	220	380	415
A-7	Bracket Assembly (L) #3	J00109-001					S00110-001		
A-12	DC.Motor Assembly	J80069-001 (A)				J80070-001 (A)	J80071-001 (B)		
A-19	Rotor	231004-001					231018-001		
A-50	Pulley	228237-001 M 90-1							
		231017-001 M 125-2							
D-6-1	Treadle Unit Assembly #8	291442-002							
D-6-1-1	Circuit Board #8	291443-001							
D-6-1-4	Treadle Spring #5	231080-001							
D-6-2	Treadle Unit Assembly #7	291281-002							
D-6-2-1	Circuit Board #7	291282-001							
D-6-2-4	Treadle Spring #4-1	236207-001							
D-8	Perse Rock-16	228290-001					229224-001		
D-10	Trans Former	6V	229946-001	229218-001	229222-001	229223-001	229218-001	229219-001	230435-001
		12V	————	230661-001	————	231336-001	230661-001	229220-001	229221-001
		NIL	————	J01174-001	————	J01192-001	J01174-001	J01209-001	J01224-001
D-18	Fuse Holder Assembly	225433-001 (Q'ty1)				224087-001 (Q'ty2)			
D-19	Fuse	218469-001 (5A) (Q'ty1)	219225-000 (8A) (Q'ty1)			215822-000 (5A) (Q'ty2)	215769-001 (3A) (Q'ty2)		
D-20	Label	224090-001	233638-001			224089-001	229160-001		
D-37	Control Circuit Unit	291786-110	291786-123			291786-323	291786-340		
D-38	Control Circuit Unit	291788-001							
D-38-1	PROM	234032-001 (A25A)							
D-39	Power Circuit Unit	291273-101	291274-101			291275-101	291276-101		
E-15 { E-23	Switch Assembly	229240-001	229237-001			229250-101	229244-001		
		230548-001 (USA)	231854-001 (OCR)	236127-001 (Australia)	230443-001 (OCR)	230549-001 (OCR)			
		230542-001 (Canada)	————	————	230545-001 (Canada)	————			

Machine Model		B7910							
Ref.No.	Sub-Class	Single Phase					Three Phase		
	Voltage (V)	110	120	220	230	240	220	380	415
A-7	Bracket Assembly (L) #3	500109-001					500110-001		
A-12	DC.Motor Assembly	J80069-001 (A)					J80070-001 (A)	J80071-001 (B)	
A-19	Rotor	231004-001					231018-001		
A-50	Pulley	228237-001 M 90-1							
		228839-001 M 105-2							
D-6-1	Treadle Unit Assembly #8	291442-002							
D-6-1-1	Circuit Board #8	291443-001							
D-6-1-4	Treadle Spring #5	231080-001							
D-6-2	Treadle Unit Assembly #7	291281-002							
D-6-2-1	Circuit Board #7	291282-001							
D-6-2-4	Treadle Spring #4-1	236207-001							
D-8	Perse Rock-16	228290-001					229224-001		
D-10	Trans Former	6V	229946-001	229218-001	229222-001	229223-001	229218-001	229219-001	230435-001
		12V	————	230661-001	————	231336-001	230661-001	229220-001	229221-001
		NIL	————	J01174-001	————	J01192-001	J01174-001	J01209-001	J01224-001
D-18	Fuse Holder Assembly	225433-001 (Q'ty1)					224087-001 (Q'ty2)		
D-19	Fuse	218469-001 (15A) (Q'ty1)	219225-000 (8A) (Q'ty1)			215822-000 (5A) (Q'ty2)	215769-001 (3A) (Q'ty2)		
D-20	Label	224090-001	233638-001			224089-001	229160-001		
D-37	Control Circuit Unit	291786-110	291786-123			291786-323	291786-340		
D-38	Control Circuit Unit	388255-001							
D-38-1	PROM	234034-001 (A25E)							
D-39	Power Circuit Unit	291273-101	291274-101			291275-101	291276-101		
E-15 { E-23	Switch Assembly	229240-001	229237-001			229250-101	229244-001		
		230548-001 (USA)	231854-001 (OCR)	236127-001 (Australia)	230443-001 (OCR)	230549-001 (OCR)			
		230542-001 (Canada)	————	————	230545-001 (Canada)	————			

Machine Model		B7740							
Ref.No.	Sub-Class	Single Phase					Three Phase		
	Voltage (V)	110	120	220	230	240	220	380	415
A-7	Bracket Assembly (L) #3	J00109-001					J00110-001		
A-12	DC.Motor Assembly	J80069-001 (A)				J80070-001 (A)	J80071-001 (B)		
A-19	Rotor	231004-001					231018-001		
A-50	Pulley	228237-001 M 90-1							
		228839-001 M 105-2							
D-6-1	Treadle Unit Assembly #8	291442-002							
D-6-1-1	Circuit Board #8	291443-001							
D-6-1-4	Treadle Spring #5	231080-001							
D-6-2	Treadle Unit Assembly #7	291281-002							
D-6-2-1	Circuit Board #7	291282-001							
D-6-2-4	Treadle Spring #4-1	236207-001							
D-8	Perse Rock-16	228290-001					229224-001		
D-10	Trans Former	6V	229946-001	229218-001	229222-001	229223-001	229218-001	229219-001	230435-001
		12V	—————	230661-001	—————	231336-001	230661-001	229220-001	229221-001
		NIL	—————	J01174-001	—————	J01192-001	J01174-001	J01209-001	J01224-001
D-18	Fuse Holder Assembly	225433-001 (Q'ty1)				224087-001 (Q'ty2)			
D-19	Fuse	218469-001 (15A) (Q'ty1)	219225-000 (8A) (Q'ty1)			215822-000 (5A) (Q'ty2)	215769-001 (3A) (Q'ty2)		
D-20	Label	224090-001	233638-001			224089-001	229160-001		
D-37	Control Circuit Unit	291786-110	291786-123			291786-323	291786-340		
D-38	Control Circuit Unit	388256-001							
D-38-1	PROM	235039-001 (A25H)							
D-39	Power Circuit Unit	291273-101	291274-101			291275-101	291276-101		
E-15 { E-23	Switch Assembly	229240-001	229237-001			229250-001	229244-001		
		230548-001 (USA)	231854-001 (OCR)	236127-001 (Australia)	230443-001 (OCR)	230549-001 (OCR)			
		230542-001 (Canada)	—————			230545-001 (Canada)	—————		

Machine Model		B8450							
Ref.No.	Sub-Class	Single Phase					Three Phase		
	Voltage (V)	110	120	220	230	240	220	380	415
A-7	Bracket Assembly (L) #3	J00109-001					J00110-001		
A-12	DC.Motor Assembly	J80069-001 (A)				J80070-001 (A)	J80071-001 (B)		
A-19	Rotor	231004-001					231018-001		
A-50	Pulley	228840-001 M 80-1							
D-6-1	Treadle Unit Assembly #8	291442-002							
D-6-1-1	Circuit Board #8	291443-001							
D-6-1-4	Treadle Spring #5	231080-001							
D-6-2	Treadle Unit Assembly #7	291281-002							
D-6-2-1	Circuit Board #7	291282-001							
D-6-2-4	Treadle Spring #4-1	236207-001							
D-8	Perse Rock-16	228290-001					229224-001		
D-10	Trans Former	6V	229946-001	229218-001	229222-001	229223-001	229218-001	229219-001	230435-001
		12V	————	230661-001	————	231336-001	230661-001	229220-001	229221-001
		NIL	————	J01174-001	————	J01192-001	J01174-001	J01209-001	J01224-001
D-18	Fuse Holder Assembly	225433-001 (Q'ty1)				224087-001 (Q'ty2)			
D-19	Fuse	218469-001 (15A) (Q'ty1)		219225-000 (8A) (Q'ty1)		215822-000 (5A) (Q'ty2)	215769-001 (3A) (Q'ty2)		
D-20	Label	224090-001		233638-001		224089-001	229160-001		
D-37	Control Circuit Unit	388259-110		388259-123		388259-323	388259-340		
D-38	Control Circuit Unit	388257-001							
D-38-1	PROM	235041-001 (A30E)							
D-39	Power Circuit Unit	291273-101		291274-101		291275-101	291276-101		
E-15 { E-23	Switch Assembly	229240-001		229237-001		229250-001	229244-001		
		230548-001 (USA)		231854-001 (OCR)		236127-001 (Australia)	230443-001 (OCR)		230549-001 (OCR)
		230542-001 (Canada)		————		230545-001 (Canada)	————		

CONTROL BOX FOR SUPPLY LIST

Voltage			Destimation	Parts Code No. 7.8.9 Digit										Motor		
Power Source	Lamp	Treadle Unit		1~6 Digit	020	025	035	040	045	050	047	033	038	043	Code No.	Type
				r.p.m	2000	2500	3500	4000	4500	5000	4500	3000	3500	4000		
<Single Phase>				B798	B748	B737 Mark II			B791	B737	B852	Twin Needle				
110V	6V	#11		J80035	GB212A	GB322A	GB342A	GB452A	GB462A	GB572A	GB462A2	GB332A3	GB342A3	GB452A3	J80069001	MD-806A
		#11	USA	J80330	GB212A	GB322A	GB342A	GB452A	GB462A	GB572A	GB462A2	GB332A3	GB342A3	GB452A3		
		#10	Taiwan	J80036	GA212A	GA322A	GA342A	GA452A	GA462A	GA572A	GA462A2	GA332A3	GA342A3	GA452A3		
120V	6V	#11	Mexico	J80147	GB212A	GB322A	GB342A	GB452A	GB462A	GB572A	GB462A2	GB332A3	GB342A3	GB452A3		
220V	6V	#11		J80039	GB212A	GB322A	GB342A	GB452A	GB462A	GB572A	GB462A2	GB332A3	GB342A3	GB452A3		
		#10	Taiwan	J80041	GA212A	GA322A	GA342A	GA452A	GA462A	GA572A	GA462A2	GA332A3	GA342A3	GA452A3		
	12V	#11		J80038	GB212B	GB322B	GB342B	GB452B	GB462B	GB572B	GB462B2	GB332B3	GB342B3	GB452B3		
	NIL	#11	Germany	J80157	GB212C	GB322C	GB342C	GB452C	GB462C	GB572C	GB462C2	GB332C3	GB342C3	GB452C3		
#10			J80171	GA212C	GA322C	GA342C	GA452C	GA462C	GA572C	GA462C2	GA332C3	GA342C3	GA452C3			
230V	6V	#11		J80043	GB212A	GB322A	GB342A	GB452A	GB462A	GB572A	GB462A2	GB332A3	GB342A3	GB452A3		
		#10		J80044	GA212A	GA322A	GA342A	GA452A	GA462A	GA572A	GA462A2	GA332A3	GA342A3	GA452A3		
	NIL	#11	New Zealand	J80046	GB212C	GB322C	GB342C	GB452C	GB462C	GB572C	GB462C2	GB332C3	GB342C3	GB452C3		
240V	6V	#11	Australia	J80048	GB212A	GB322A	GB342A	GB452A	GB462A	GA572A	GB462A2	GB332A3	GB342A3	GB452A3		
	12V	#11		J80047	GB212B	GB322B	GB342B	GB452B	GB462B	GB572B	GB462B2	GB332B3	GB342B3	GB452B3		
	NIL	#11	U.Kingdom	J80215	GB212C	GA322C	GB342C	GB452C	GB462C	GA572C	GB462C2	GB332C3	GB342C3	GB452C3		
<Three Phase>																
220V	6V	#11		J80050	GB212A	GB322A	GB342A	GB452A	GB462A	GB572A	GB462A2	GB332A3	GB342A3	GB452A3	J80070001	MD-816A
		#11	USA	J80336	GB212A	GB322A	GB342A	GB452A	GB462A	GB572A	GB462A2	GB332A3	GB342A3	GB452A3		
		#10	Taiwan	J80054	GA212A	GA322A	GA342A	GA452A	GA462A	GA572A	GA462A2	GA332A3	GA342A3	GA452A3		
	12V	#11		J80049	GB212B	GB322B	GB342B	GB452B	GB462B	GB572B	GB462B2	GB332B3	GB342B3	GB452B3		
		#11		J80243	GB212C	GB322C	GB342C	GB452C	GB462C	GB572C	GB462C2	GB332C3	GB342C3	GB452C3		
	NIL	#10		J80257	GA212C	GA322C	GA342C	GA452C	GA462C	GA572C	GA462C2	GA332C3	GA342C3	GA452C3		
380V	6V	#11		J80059	GB212A	GB322A	GB342A	GB452A	GB462A	GB572A	GB462A2	GB332A3	GB342A3	GB452A3	J80071001	MD-816B
		#10		J80062	GA212A	GA322A	GA342A	GA452A	GA462A	GA572A	GA462A2	GA332A3	GA342A3	GA452A3		
	12V	#11		J80055	GB212B	GB322B	GB342B	GB452B	GB462B	GB572B	GB462B2	GB332B3	GB342B3	GB452B3		
		#11	Germany	J80281	GB212C	GB322C	GB342C	GB452C	GB462C	GB572C	GB462C2	GB332C3	GB342C3	GB452C3		
415V	6V	#11		J80067	GB212A	GB322A	GB342A	GB452A	GB462A	GB572A	GB462A2	GB332A3	GB342A3	GB452A3		
	12V	#11		J80063	GB212B	GB322B	GB342B	GB452B	GB462B	GB572B	GB462B2	GB332B3	GB342B3	GB452B3		
	NIL	#11	U.Kingdom	J80303	GB212C	GB322C	GB342C	GB452C	GB462C	GB572C	GB462C2	GB332C3	GB342C3	GB452C3		

CONTROL BOX FOR SUPPLY LIST

Voltage			Destimation	Parts Code No. 7.8.9 Digit								Motor				
Power Source	Lamp	Treadle Unit		1~6 Digit	035	040	050		1~6 Digit	010	025			Code No.	Type	
				r.p.m	3500	4000	5000	r.p.m	1000	2500						
				B730 NBN <Single Phase>				B883 BAST <Single Phase>								
110V	6V	#11		J80129			GB573A		J80130	GB206A			J80069001	MD-806A		
		#11	USA	J80331			GB573A		J80332	GB206A						
		#10		J80134			GA573A		J80135	GA206A						
120V	6V	#11		J80138			GB573A		J80139	GB206A						
220V	6V	#11		J80040			GB573A		J80082	GB206A						
		#10		J80042			GA573A		J80154	GA206A						
	12V	#11		J80037			GB573B		J80143	GB206B						
		#11		J80158			GB573C		J80159	GB206C						
230V	6V	#11		J80186			GB573A		J80187	GB206A						
		#10		J80045			GA573A		J80191	GA206A						
	NIL	#11		J80195			GB573C		J80196	GB206C						
240V	6V	#11		J80210			GB573A		J80211	GB206A						
	12V	#11		J80205			GB573B		J80206	GB206B						
	NIL	#11		J80216			GB573C		J80217	GB206C						
				B730 NBN <Three Phase>				B883 BAST <Three Phase>								
220V	6V	#11		J80051			GB573A		J80052	GB206A			J80070001	MD-816A		
		#11	USA	J80337			GB573A		J80338	GB206A						
		#10		J80238			GA573A		J80239	GA206A						
	12V	#11		J80231			GB573B		J80232	GB206B						
		#11		J80244			GB573C		J80245	GB206C						
	NIL	#10		J80258			GA573C		J80259	GA206C						
380V		6V	#11		J80060			GB573A		J80273	GB206A			J80071001	MD-816B	
	#10			J80276			GA573A		J80277	GA206A						
	12V	#11		J80056			GB573B		J80057	GB206B						
#11			J80282			GB573C		J80283	GB206C							
415V	6V	#11		J80298			GB573A		J80299	GB206A						
	12V	#11		J80064			GB573B		J80065	GB206B						
	NIL	#11		J80304			GB573C		J80305	GB206C						

CONTROL BOX FOR SUPPLY LIST

Voltage			Destimation	Parts Code No. 7.8.9 Digit								Motor		
Power Source	La mp	Trea- dle Unit		1~6 Digit	020	024	026		1~6 Digit	020	024	026	Code No.	Type
				r.p.m	2000	2400	2600	r.p.m	2000	2400	2600			
				P62, P64 <Single Phase>				C51, P73, P81 <Single Phase>						
110V	6V	#11		J80132	GB31LA	GB32LA	GB33LA		J80131	GB31PA	GB32PA	GB33PA	J80069001	MD-806A
		#11	USA	J80333	GB31LA	GB32LA	GB33LA		J80334	GB31PA	GB32PA	GB33PA		
		#10		J80137	GA31LA	GA32LA	GA33LA		J80136	GA31PA	GA32PA	GA33PA		
120V	6V	#11		J80141	GB31LA	GB32LA	GB33LA		J80140	GB31PA	GB32PA	GB33PA		
220V	6V	#11		J80153	GB31LA	GB32LA	GB33LA		J80152	GB31PA	GB32PA	GB33PA		
		#10		J80155	GA31LA	GA32LA	GA33LA		J80354	GA31PA	GA32PA	GA33PA		
	12V	#11		J80145	GB31LB	GB32LB	GB33LB		J80144	GB31PB	GB32PB	GB33PB		
		NIL	#11		J80161	GB31LC	GB32LC	GB33LC		J80160	GB31PC	GB32PC		
	#10			J80175	GA31LC	GA32LC	GA33LC		J80174	GA31PC	GA32PC	GA33PC		
	230V	6V	#11		J80189	GB31LA	GB32LA	GB33LA		J80188	GB31PA	GB32PA		
#10				J80193	GA31LA	GA32LA	GA33LA		J80192	GA31PA	GA32PA	GA33PA		
NIL		#11		J80198	GB31LC	GB32LC	GB33LC		J80197	GB31PC	GB32PC	GB33PC		
240V	6V	#11		J80213	GB31LA	GB32LA	GB33LA		J80212	GB31PA	GB32PA	GB33PA		
	12V	#11		J80208	GB31LB	GB32LB	GB33LB		J80207	GB31PB	GB32PB	GB33PB		
	NIL	#11		J80219	GB31LC	GB32LC	GB33LC		J80218	GB31PC	GB32PC	GB33PC		
				P62, P64 <Three Phase>				C51, P73, P81 <Three Phase>						
220V	6V	#11		J80237	GB31LA	GB32LA	GB33LA		J80236	GB31PA	GB32PA	GB33PA	J80070001	MD-816A
		#11	USA	J80339	GB31LA	GB32LA	GB33LA		J80340	GB31PA	GB32PA	GB33PA		
		#10		J80241	GA31LA	GA32LA	GA33LA		J80240	GA31PA	GA32PA	GA33PA		
	12V	#11		J80234	GB31LB	GB32LB	GB33LB		J80233	GB31PB	GB32PB	GB33PB		
	NIL	#11		J80247	GB31LC	GB32LC	GB33LC		J80246	GB31PC	GB32PC	GB33PC		
#10			J80261	GA31LC	GA32LC	GA33LC		J80260	GA31PC	GA32PC	GA33PC			
380V	6V	#11		J80275	GB31LA	GB32LA	GB33LA		J80274	GB31PA	GB32PA	GB33PA	J80071001	MD-816B
		#10		J80279	GA31LA	GA32LA	GA33LA		J80278	GA31PA	GA32PA	GA33PA		
	12V	#11		J80272	GB31LB	GB32LB	GB33LB		J80271	GB31PB	GB32PB	GB33PB		
415V	6V	#11		J80285	GB31LC	GB32LC	GB33LC		J80284	GB31PC	GB32PC	GB33PC		
		#10		J80301	GB31LA	GB32LA	GB33LA		J80300	GB31PA	GB32PA	GB33PA		
	12V	#11		J80297	GB31LB	GB32LB	GB33LB		J80296	GB31PB	GB32PB	GB33PB		
NIL		#11		J80307	GB31LC	GB32LC	GB33LC		J80306	GB31PC	GB32PC	GB33PC		

CONTROL BOX FOR SUPPLY LIST

Voltage			Destimation	Parts Code No. 7.8.9 Digit								Motor				
Power Source	Lamp	Treadle Unit		1~6 Digit	125	135	140		1~6 Digit	133	138	143		Code No.	Type	
				r.p.m	2500	3500	4000	r.p.m	3000	3500	4000					
				APM (B7700) <Single Phase>				B845-900S <Single Phase>								
110V	6V	#11		388613			GB45ZA		385052	GB234A3			J80069001	MD-806A		
		#10		388614			GA45ZA		385062	GA234A3						
120V	6V	#11		388622			GB45ZA		385071	GB234A3						
220V	6V	#11		388625			GB45ZA		385098	GB234A3						
		#10		388659			GA45ZA		385117	GA234A3						
	12V	#11		388615			GB45ZB		385080	GB234B3						
		#11		385088			GB45ZB		385089	GB234B3						
	NIL	#11		J80164			GB45ZC		J80163	GB234C3						
		#10		J80179			GA45ZC		J80178	GA234C3						
230V	6V	#11		388661			GB45ZA		385126	GB234A3						
		#10		388632			GA45ZA		385136	GA234A3						
	NIL	#11		J80200			GB45ZC		J80199	GB234C3						
240V	6V	#11		388637			GB45ZA		385164	GB234A3						
	12V	#11		388636			GB45ZB		385154	GB234B3						
	NIL	#11		J80222			GB45ZC		J80221	GB234C3						
				APM (B7700) <Three Phase>				B845-900S <Three Phase>								
220V	6V	#11		388640			GB45ZA		385197	GB234A3			J80070001	MD-816A		
		#10		388641			GA45ZA		385107	GA234A3						
	12V	#11		388639			GB45ZB		385180	GB234B3						
		#11		385188			GB45ZB		385189	GB234B3						
	NIL	#11		J80250			GB45ZC		J80249	GB234C3						
		#10		J80264			GA45ZC		J80263	GA234C3						
380V	6V	#11		388644			GB45ZA		385224	GB234A3			J80071001	MD-816B		
		#10		388652			GA45ZA		385227	GA234A3						
	12V	#11		388643			GB45ZB		385206	GB234B3						
		#11		385215			GB45ZB		385216	GB234B3						
	NIL	#11		J80288			GB45ZC		J80287	GB234C3						
		#10		J80310			GA45ZC		J80309	GA234C3						
415V	6V	#11		388657			GB45ZA		385244	GB234A3						
	12V	#11		388656			GB45ZB		385235	GB234B3						
	NIL	#11		J80310			GB45ZC		J80309	GB234C3						

CONTROL BOX FOR SUPPLY LIST

Voltage			Destimation	Parts Code No. 7.8.9 Digit								Motor				
Power Source	La mp	Trea- dle Unit		1~6 Digit	135	150			1~6 Digit	135	145			Code No.	Type	
				r.p.m	3500	5000			r.p.m	3500	4500					
				B7380 <Single Phase>				B7910 <Single Phase>								
110V	6V	#11		385047		GB578A			385048		GB469A		J80069001	MD-806A		
		#10		385057		GA578A			385058		GA469A					
120V	6V	#11		385066		GB578A			385067		GB469A					
220V	6V	#11		385093		GB578A			385094		GB469A					
		#10		385112		GA578A			385113		GA469A					
	12V	#11		385075		GB578B			385076		GB469B					
		#11		385084		GB578B			385085		GB469B					
NIL	#11		J80167		GB578C			J80168		GB469C						
	#10		J80182		GA578C			J80183		GA469C						
230V	6V	#11		385121		GB578A			385122		GB469A					
		#10		385131		GA578A			385132		GA469A					
	NIL	#11		385140		GA578C			J80202		GA469C					
240V	6V	#11		385159		GB578A			385160		GB469A					
	12V	#11		385149		GB578B			385150		GB469B					
	NIL	#11		J80225		GB578C			J80226		GB469C					
				B7380 <Three Phase>				B7910 <Three Phase>								
220V	6V	#11		385193		GB578A			385194		GB469A		J80070001	MD-816A		
		#10		385061		GA578A			385070		GA469A					
	12V	#11		385176		GB578B			385177		GB469B					
		#11		385184		GB578B			385185		GB469B					
	NIL	#11		J80253		GB578C			J80254		GB469C					
#10			J80267		GA578C			J80268		GA469C						
380V	6V	#11		385220		GB578A			385221		GB469A		J80071001	MD-816B		
		#10		385144		GA578A			385153		GA469A					
	12V	#11		385202		GB578B			385203		GB469B					
		#11		385211		GB578B			385212		GB469B					
	NIL	#11		J80291		GB578C			J80292		GB469C					
415V	6V	#11		385240		GB578A			385241		GB469A					
	12V	#11		385231		GB578B			385232		GB469B					
	NIL	#11		J80313		GB578C			J80149		GB469C					

CONTROL BOX FOR SUPPLY LIST

Voltage			Destimation	Parts Code No. 7.8.9 Digit									Motor			
Power Source	Lamp	Treadle Unit		1~6 Digit	135	140	145		1~6 Digit	133	138	143		Code No.	Type	
				r.p.m	3500	4000	4500		r.p.m	3000	3500	4000				
			B7740 <Single Phase>					B8450 <Single Phase>								
110V	6V	#11		385049			GB460A		385050	GB235A3			J80069001	MD-806A		
		#10		385059			GA460A		385060	GA235A3						
120V	6V	#11		385068			GB460A		385069	GB235A3						
220V	6V	#11		385095			GB460A		385096	GB235A3						
		#10		385114			GA460A		385115	GA235A3						
	12V	#11		385077			GB460B		385078	GB235B3						
		#11		385086			GB460B		385087	GB235B3						
NIL	#11		J80169			GB460C		J80170	GB235C3							
	#10		J80184			GA460C		J80185	GA235C3							
230V	6V	#11		385123			GB460A		385124	GB235A3						
		#10		385133			GA460A		385134	GA235A3						
NIL	#11		J80203			GA460C		J80204	GA235C3							
240V	6V	#11		385161			GB460A		385162	GB235A3						
	12V	#11		385151			GB460B		385152	GB235B3						
	NIL	#11		J80227			GB460C		J80228	GB235C3						
			B7740 <Three Phase>					B8450 <Three Phase>								
220V	6V	#11		385195			GB460A		385196	GB235A3			J80070001	MD-816A		
		#10		385079			GA460A		385097	GA235A3						
	12V	#11		385178			GB460B		385179	GB235B3						
		#11		385186			GB460B		385187	GB235B3						
	NIL	#11		J80255			GB460C		J80256	GB235C3						
#10			J80269			GA460C		J80270	GA235C3							
380V	6V	#11		385222			GB460A		385223	GB235A3			J80071001	MD-816B		
		#10		385163			GA460A		385226	GA235A3						
	12V	#11		385204			GB460B		385205	GB235B3						
		#11		385213			GB460B		385214	GB235B3						
NIL	#11		J80293			GB460C		J80294	GB235C3							
415V	6V	#11		385242			GB460A		385243	GB235A3						
	12V	#11		385233			GB460B		385234	GB235B3						
	NIL	#11		J80150			GB460C		J80151	GB235C3						

CONTROL BOX FOR SUPPLY LIST

Voltage			Destimation	Parts Code No. 7.8.9 Digit								Motor				
Power Source	Lamp	Treadle Unit		1~6 Digit	045	060			1~6 Digit	160	180			Code No.	Type	
				r.p.m	4500	6000			r.p.m	6000	8000					
				COV (飾り) <Single Phase>				Lock-ABL <Single Phase>								
110V	6V	#11	J80126		GB58WA			385053		GB59YA			J80321001	MD-807AR		
		#11	J80335		GB58WA											
		#10	J80133		GA58WA			385063		GA59YA						
120V	6V	#11	J80142		GB58WA			385072		GB59YA						
220V	6V	#11	J80085		GB58WA			385099		GB59YA						
		#10	J80156		GA58WA			385118		GA59YA						
	12V	#11	J80146		GB58WB			385081		GB59YB						
		#11						385090		GB59YB						
	NIL	#11	J80165		GB58WC			J80166		GB59YC						
		#10	J80180		GA58WC			J80181		GA59YC						
230V	6V	#11	J80190		GB58WA			385127		GB59YA						
		#10	J80194		GA58WA			385137		GA59YA						
	NIL	#11	J80201		GB58WC			J80148		GB59YC						
		240V	6V	#11	J80214		GB58WA		385165		GB59YA					
		12V	#11	J80209		GB58WB			385155		GB59YB					
	NIL	#11	J80223		GB58WC			J80224		GB59YC						
				COV (飾り) <Three Phase>				Lock-ABL <Three Phase>								
220V	6V	#11	J80053		GB58WA			385198		GB59YA			J80073001	MD-817AR		
		#11	J80341		GB58WA											
		#10	J80242		GA58WA			385116		GA59YA						
	12V	#11	J80235		GB58WB			385181		GB59YB						
		#11						385190		GB59YB						
	NIL	#11	J80251		GB58WC			J80252		GB59YC						
#10		J80265		GA58WC			J80266		GA59YC							
380V	6V	#11	J80061		GB58WA			385225		GB59YA			J80074001	MD-817BR		
		#10	J80280		GA58WA			385228		GA59YA						
	12V	#11	J80058		GB58WB			385207		GB59YB						
		#11						385217		GB59YB						
	NIL	#11	J80289		GB58WC			J80290		GB59YC						
415V	6V	#11	J80302		GB58WA			385245		GB59YA						
	12V	#11	J80066		GB58WB			385236		GB59YB						
	NIL	#11	J80311		GB58WC			J80312		GB59YC						

INDEX / VERZEICHNIS /
INDEX / INDICE

PARTS NO.	REF. NO.	PARTS NO.	REF. NO.
J00021-001	H-11-24	J00901-001	B-4-2
J00022-001	H-11-27	J00952-001	B-11
J00025-001	B-21	J01166-001	B-6,C-10
J00048-001	B-28,C-42	J01174-001	D-10
J00074-001	A-13,B-14	J01183-001	B-6,C-10
J00106-001	A-54	J01192-001	D-10
J00107-001	A-4	J01197-001	B-6,C-10
J00109-001	A-7	J01209-001	D-10
J00110-001	A-7	J01215-001	B-6,C-10
J00112-001	A-16-1	J01224-001	D-10
J00116-001	B-1	J01293-001	B-6
J00117-001	B-32	J01294-001	B-6
J00117-002	B-32	J01295-001	B-6
J00117-003	B-32	J01370-001	B-12
J00118-001	B-16	J80068-001	A-12
J00119-001	B-3	J80069-001	A-12
J00120-001	B-4-1	J80070-001	A-12
J00121-001	B-31	J80071-001	A-12
J00128-001	A-42-3	J80073-001	A-12
J00130-001	A-43	J80074-001	A-12
J00143-001	A-55	J80089-001	B-25
J00146-001	A-27	J80090-001	B-25
J00147-001	A-29	J80091-001	B-25
J00148-001	A-28	J80092-001	B-25
J00149-001	A-31	J80093-001	B-25
J00155-001	B-33	J80095-001	B-25
J00165-001	B-35	J80096-001	B-25
J00167-001	B-36	J80097-001	B-25
J00169-001	B-37	J80098-001	B-25
J00179-001	B-17	J80100-001	B-25
J00189-001	B-29	J80101-001	B-25
J00212-001	B-37	J80102-001	B-25
J00239-001	B-35	J80103-001	B-25
J00283-001	B-40	J80105-001	B-25
J00325-001	B-36	J80106-001	B-25
J00337-001	B-41	J80107-001	B-25
J00351-001	A-56	J80109-001	B-25
J00353-001	B-2,C-2,C-13,D-2,D-13	J80111-001	B-25
J00440-001	B-35	J80112-001	B-25
J00452-001	E-15	J80113-001	B-25
J00453-001	E-21	J80115-001	B-18
J00455-001	E-15	J80116-001	B-18
J00460-001	E-16	J80117-001	B-18
J00462-001	E-21	J80118-001	B-18
J00464-001	E-17	J80119-001	B-18
J00464-001	E-16	J80120-101	C-40
J00468-001	E-20	J80122-110	C-37
J00470-001	E-18	J80122-123	C-37
J00471-001	E-22	J80122-323	C-37
J00473-001	E-19	J80122-340	C-37
J00475-001	E-21	J80315-001	B-25
J00650-001	B-35	J80316-001	B-25
J00653-001	B-34	J80318-001	B-25
J00654-001	C-1,D-1	J80319-001	A-42
J00700-001	B-6	J80321-001	A-12
J00717-001	B-6	S02701-001	G-27
J00718-001	B-6	S02702-001	G-22
J00719-001	B-6	S02703-001	G-23
J00720-001	B-6	S03816-001	E-24
J00721-001	B-6	S14823-001	H-11-12

PARTS NO.	REF. NO.	PARTS NO.	REF. NO.
008400-805	A-18-5	219225-000	B-26,C-35,D-34
018400-832	C-23,D-23	219517-000	A-46
021080-206	A-37	219582-001	A-32
021080-302	H-10-6,H-11-6	219603-001	A-33
021100-206	A-9	221024-001	C-28,D-36
021140-305	A-53	222372-001	A-34
021400-305	H-11-26	222753-000	A-45
025030-132	G-18	223738-001	E-22-1
025040-173	C-34,D-33	223739-001	E-21-1
025040-335	H-11-23	224087-001	B-19,C-18,D-18
025100-236	A-10	224089-001	C-20,D-20
026350-132	G-15	224090-001	C-20,D-20
028030-242	G-17	224475-001	A-1
028040-245	C-24,C-33,D-24 D-27,D-32	224476-000	A-3
028080-242	H-10-5,H-11-5	224485-000	A-20
028080-246	A-36	224487-000	A-21
028100-246	A-11	224503-001	A-48
028350-242	G-14	224504-001	A-18-4
031311-302	H-4	224508-001	A-57
060671-212	E-9,F-4	224510-001	E-18-1,E-19-1,E-20-1
061300-605	H-1-3	224513-001	E-19-3
061400-402	H-10-17,H-11-19	224540-001	A-6
061401-205	H-10-9,H-11-9,H-11-28	225432-001	C-21,D-21
062061-005	A-5	225433-001	C-18,D-18
062301-402	G-16	225534-001	H-11-21
062401-263	C-32,D-30	225539-001	E-15-1,E-16-1,E-17-1
062402-005	H-11-22	226671-001	A-18-3
062670-612	G-21	226992-001	A-2
062670-812	G-40	228216-001	A-41
062672-012	G-13	228221-001	A-14
062680-812	G-26	228237-001	A-50
062681-212	E-8,F-5	228243-001	E-15-2
076202-801	A-22,A-42-2	228272-001	E-19-2
090181-120	H-1-11	228280-002	C-22,D-22
104821-001	B-5,C-5,D-5	228284-001	B-7,C-9,D-9
142268-001	G-30	228287-002	C-12,D-12
151431-001	G-32	228290-001	B-15-1,C-8-1,D-8-1
200190-001	E-25,H-13	228294-001	C-36,D-40
203684-001	A-26	228324-001	C-29
210965-081	A-8	228414-002	D-26
211528-001	A-44,A-51	228415-001	D-28
213650-001	A-35	228475-000	H-10-25,H-11-35
214897-001	A-25	228831-002	B-39-2-1,C-6-2-1
215080-001	A-15,A-42-4	228839-001	A-50
215081-001	A-17	228840-000	A-50
215082-001	B-22	228957-001	H-11-25
215082-002	F-3	229017-001	B-39-1-3,C-6-1-3
215082-002	E-7	229160-001	C-20,D-20
215504-001	E-23-1	229208-001	D-35
215769-001	B-20,C-19	229218-001	D-10
215822-000	B-13,B-20,C-19,D-19	229219-001	D-10
215971-001	B-9-1,C-4-1,D-4-1	229220001	D-10
216596-001	C-7,D-7	229221-001	D-10
216740-001	C-25,D-25	229222-001	D-10
216872-001	B-8,C-11,C-17 D-11,D17	229223-001	D-10
217093-001	C-30,H-10-16,H-11-18	229224-001	B-15-2,C-8-2,D-8-2
217133-001	A-30	229237-001	E-16
218469-001	C-19,D-19	229238-001	E-16-2
		229239-001	E-16-3
		229240-001	E-15

PARTS NO.	REF. NO.	PARTS NO.	REF. NO.
229241-001	E-15-3,E-17-3	233121-007	C-26
229244-001	E-18	233123-003	C-38
229245-001	E-18-2	233146-001	C-43
229246-001	E-18-3	233193-001	B-27,C-39
229250-001	E-19	233198-002	H-1-1
229335-001	A-18-2	233201-002	H-1-2
229558-002	C-41	233202-001	H-1-10
229559-001	C-27	233203-001	H-1-4
229561-001	B-6,C-10	233204-001	H-1-5
229623-001	B-6,C-10	233205-001	H-1-6
229643-001	B-6,C-10	233206-001	H-1-7
229644-001	B-6,C-10	233207-001	H-1-8
229645-001	B-6,C-10	233208-001	H-1-9
229646-001	B-6,C-10	233209-001	H-1-12
229946-001	D-10	233210-001	H-1-13
229963-001	B-6,C-10	233211-001	H-1-14
230214-001	B-6,C-10	233217-001	H-10-1
230431-001	A-18	233221-003	H-10-2,H-11-2
230432-001	A-18-1	233222-003	H-10-3,H-11-3
230435-001	D-10	233223-001	H-10-4,H-11-4
230443-001	E-22	233224-002	H-10-7,H-11-7
230444-001	E-22-2	233225-001	H-10-15
230445-001	E-22-3	233228-001	H-10-12
230542-001	E-17	233229-001	H-10-13,H-11-13
230543-001	E-17-2	233230-001	H-10-14,H-11-14
230545-001	E-20	233231-001	H-10-8,H-11-17
230546-001	E-20-2	233232-001	H-10-11,H-11-11
230547-001	E-20-3	233233-001	H-10-10,H-11-10
230548-001	E-21	233234-001	H-10-18
230549-001	E-23	233236-001	H-3,H-11-33
230550-001	E-23-2	233246-001	H-10-20,H-11-29
230551-001	E-23-3	233250-001	H-10-21,H-11-31
230660-001	B-6,C-10	233251-003	H-10-22
230661-001	D-10	233258-002	F-1-1
231004-001	A-19	233263-001	F-7
231006-001	A-19	233268-002	F-1-2
231007-001	A-19	233378-001	H-2
231008-001	A-23	233487-002	H-10-24,H-11-34
231009-001	A-24	233488-002	H-10-24
231013-001	A-49	233491-001	H-12
231017-001	A-50	233494-001	H-10-18
231018-001	A-19	233500-001	G-20
231069-002	B-39-1-1,D-6-1-1	233501-001	F-8
231080-001	B-39-1-4,C-6-1-4 D-6-1-4	233515-001	H-14
231335-001	B-6,C-10	233534-001	E-21-3
231336-001	D-10	233544-001	G-25
231458-001	A-47	233545-001	G-24
232459-001	B-9-2,C-4-2,D-4-2	233573-001	G-33
233063-001	G-19	233574-001	G-37
233067-001	G-12	233575-001	G-31
233074-002	E-3-1	233603-002	F-6
233079-002	E-2-1	233604-001	G-29
233085-002	E-1-1	233618-001	G-34
233088-002	E-4	233619-001	F-7
233089-002	E-10	233643-001	B-23-1
233090-002	E-5	233644-001	B-23-2
233091-002	G-10	233688-001	B-24
233092-001	G-11	233694-001	G-39
233093-002	F-2	233695-001	G-41
		233696-001	G-38

PARTS NO.	REF. NO.	PARTS NO.	REF. NO.
234030-001	D-41	291790-002	B-39-1, C-6-1
234032-001	D-38-1	291791-001	B-39-2-2, C-6-2-2
234034-001	D-38-1	291792-001	B-39-1-2, C-6-1-2
234060-001	D-42	385266-040	H-11
234079-001	C-27	388255-001	D-38
234081-001	C-38	388256-001	D-38
234136-001	E-44	388257-001	D-38
234137-001	D-29	388259-110	D-37
234588-002	E-14	388259-123	D-37
235007-001	C-41	388259-323	D-37
235009-001	D-47	388259-340	D-37
235029-002	D-26	388260-110	C-37
235039-001	D-38-1	388260-123	C-37
235041-001	D-38-1	388260-323	C-37
235044-001	D-46	388260-340	C-37
235052-001	D-45	388706-011	F-1
235533-001	E-21-2	388707-011	F-1
236126-001	B-6, C-10		
236207-001	B-39-2-4, C-6-2-4 D-6-2-4		
236315-001	G-43		
236682-001	C-26		
237043-002	F-2		
237641-001	A-52		
238186-001	H-11-15		
238188-001	H-11-16		
238191-001	H-11-20		
238194-001	H-11-1		
238196-001	H-11-32		
286683-001	C-27		
291273-101	C-40, D-39		
291274-101	C-40, D-39		
291275-101	C-40, D-39		
291276-101	C-40, D-39		
291281-002	D-6-2		
291282-001	D-6-2-1		
291442-002	D-6-1		
291443-001	D-6-1-1		
291640-011	F-1		
291642-011	F-1		
291655-011	F-1		
291656-011	F-1		
291657-011	F-1		
291659-011	F-1		
291660-002	H-1		
291661-043	H-10		
291662-003	H-10		
291673-011	F-1		
291674-011	F-1		
291744-011	F-1		
291784-110	C-37		
291784-123	C-37		
291784-323	C-37		
291784-340	C-37		
291786-110	D-37		
291786-123	D-37		
291786-323	D-37		
291786-340	D-37		
291788-001	D-38		
291789-002	B-39-2, C-6-2		

